

四大系列减速机

精密行星减速机



驱动每一转 · 信赖每一齿

小金刚减速机

蜗轮蜗杆减速机



台州鑫钺传动有限公司

浙江省台州市路桥区金清镇工业区

15757628388

15757628388@139.COM



精于齿轮 智于传动

创新 · 高效 · 诚信 · 共赢
Innovation, efficiency, integrity and win-win

台州鑫钺传动有限公司
TAIZHOU XINYUE TRANSMISSION CO., LTD.

COMPANY PROFILE

公司简介 |

台州鑫铖传动有限公司是一家集研发、制造、销售于一体的专业齿轮及齿轮箱生产企业，专注于为工业领域提供高性能传动系统解决方案。公司位于中国东部沿海制造业基地——浙江台州，拥有成熟的产业链配套资源及强大的机械制造基础。

Taizhou Xinyue Transmission Co., Ltd. is a specialized manufacturer integrating R&D, production, and sales of gears and gearboxes, committed to providing high-performance transmission solutions for the industrial sector. Located in Taizhou, Zhejiang—an advanced manufacturing hub in eastern China—the company benefits from a well-established industrial ecosystem and strong machining capabilities.

核心产品 | Core Products

- R系列 斜齿轮硬齿面减速机
R Series Helical Gear Reducers
- S系列 蜗轮蜗杆减速机
S Series Worm Gear Reducers
- K系列 斜齿伞齿轮减速机
K Series Helical-Bevel Gear Reducers
- F系列 平行轴斜齿轮减速机
F Series Parallel Shaft Helical Gear Reducers



产品广泛应用于自动化设备、物流运输、食品包装、冶金矿产、环保工程、农业装备等多个领域。

Our products are widely applied in automation equipment, logistics and conveying systems, foodpackaging, metallurgy and mining, environmental engineering, and agricultural machinery.

技术与服务 | Technology & Services

公司配备数控加工中心、热处理设备、齿轮检测仪器等多套专业装备，全面实施ISO质量管理体系。支持标准化批量生产与非标定制服务，实现快速响应、灵活交付，致力于为客户创造更高价值。

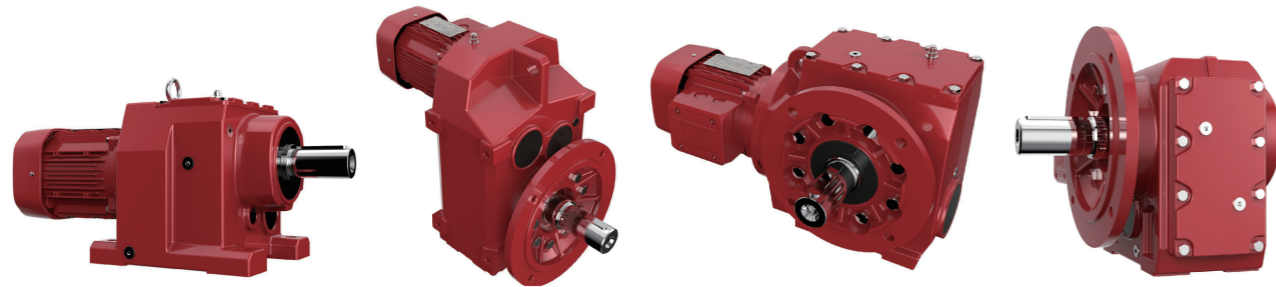
Equipped with CNC machining centers, heat treatment systems, and gear measuring instruments, Xinyue implements a strict ISO-based quality management system. We provide both standardized production and customized non-standard solutions with rapid response and flexible delivery, aiming to maximize customer value.

企业愿景 | Vision

坚持“精于齿轮 · 智于传动”的品牌理念，台州鑫铖传动将持续深耕工业传动技术，打造国内外客户信赖的齿轮箱专业品牌。

Adhering to the brand philosophy of "Precision in Gears, Intelligence in Transmission", Xinyue Transmission will continue to innovate in industrial transmission technology and strive to become a trusted gearbox brand both at home and abroad.

四大系列 减速机



- 包含MR、MF、MK、MS四个分支系列，数百种机型配置
- 模块化设计、多样化安装、运行平稳、损耗低
- 比行业标准更高的噪音品质

系列	MR	MF	MK	MS
机座号	17-167	27-157	37-167	37-97
速比范围	1.3-27001	3.77-31434	3.98-19723	6.8-33818
功率max	132kW	132kW	200kW	22kW
扭矩max	18000Nm	18000Nm	32000Nm	4000Nm

产品系列简介 / PRODUCT SERIES INTRODUCTION

MYA Series



7种可选尺寸	42mm-220mm	
额定输出力矩	14Nm-2000Nm	
减速比	单级	3/4/5/6/7/8/10
	双级	12/15/20/25/30/35 40/50/60/70/80/100
背隙	单级	≤ 1, ≤ 3, ≤ 5 arcmin
	双级	≤ 3, ≤ 5, ≤ 7 arcmin

MYAR Series



7种可选尺寸	42mm-220mm	
额定输出力矩	14Nm-2000Nm	
减速比	单级	3/4/5/6/7/8/10/14/20
	双级	12/15/20/25/30/35 40/50/60/70/80/100 120/140/160/200
背隙	单级	≤ 2, ≤ 4, ≤ 6 arcmin
	双级	≤ 4, ≤ 7, ≤ 9 arcmin

MYD Series



7种可选尺寸	47mm-255mm	
额定输出力矩	14Nm-2000Nm	
减速比	单级	4/5/6/7/8/10
	双级	20/25/35/40/50/60 70/80/100
背隙	单级	≤ 1, ≤ 3, ≤ 5 arcmin
	双级	≤ 3, ≤ 5, ≤ 7 arcmin

MYDR Series



7种可选尺寸	47mm-255mm	
额定输出力矩	14Nm-2000Nm	
减速比	单级	4/5/6/7/8/10/14/20
	双级	20/25/35/40/50/60 70/80/100/120/140 160/200
背隙	单级	≤ 2, ≤ 4, ≤ 6 arcmin
	双级	≤ 4, ≤ 7, ≤ 9 arcmin

MYB Series



7种可选尺寸	42mm-220mm	
额定输出力矩	14Nm-2000Nm	
减速比	单级	3/4/5/6/7/8/10
	双级	12/15/20/25/30/35 40/50/60/70/80/100
背隙	单级	≤ 5 arcmin
	双级	≤ 7 arcmin

MYBR Series



5种可选尺寸	60mm-180mm	
额定输出力矩	40Nm-650Nm	
减速比	单级	3/4/5/6/7/8/10/14/20
	双级	12/15/20/25/30/35 40/50/60/70/80/100 120/140/160/200
背隙	单级	≤ 6 arcmin
	双级	≤ 9 arcmin

MYC Series



5种可选尺寸	42mm-142mm	
额定输出力矩	14Nm-650Nm	
减速比	单级	3/4/5/6/7/8/10
	双级	12/15/20/25/30/35 40/50/60/70/80/100
背隙	单级	≤ 8 arcmin
	双级	≤ 10 arcmin

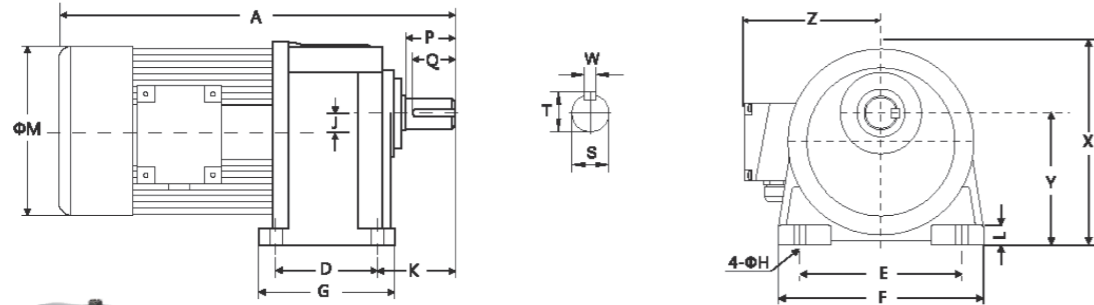
MYCR Series



4种可选尺寸	60mm-142mm	
额定输出力矩	40Nm-650Nm	
减速比	单级	3/4/5/6/7/8/10/14/20
	双级	12/15/20/25/30/35 40/50/60/70/80/100 120/140/160/200
背隙	单级	≤ 13 arcmin
	双级	≤ 15 arcmin

GH 卧式三相缩框型 (刹车) 减速马达

GH Horizontal Type Light Duty Palte 3-Phase(Brake) Motor



GH卧式 标准型

出力轴尺寸 Output Shaft						
出力轴 Shaft		键槽 Keyway			键 Key	
S	h6	P	W	T	Q	SPEC'
Φ18		30	5	20	25	5×5×25
Φ22		40	7	25	35	7×7×35
Φ28		45	7	31	40	7×7×40
Φ32		55	10	35	50	10×8×50
Φ40		65	10	43	60	10×8×60

安装尺寸 (Dimensions)

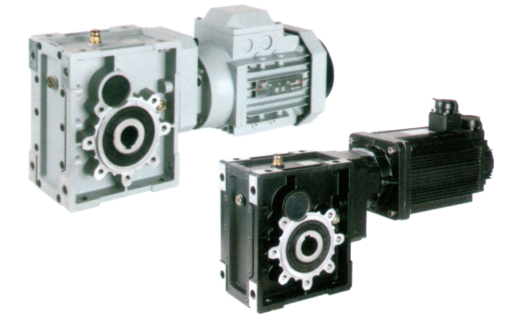
单位: mm

馬力 Power	減速比 Ratio	本體 Code	型號 Size	A	D	E	F	G	H	J	K	L	M	X	Y	Z
0.1KW 1/8HP	60-100	1#	18	255	40	110	135	65	9	16	50	14	129	130	88.5	120
	15-90	1#	18	290	40	110	135	65	9	16	50	14	129	130	88.5	120
0.2KW 1/4HP	100-200	2#	22	320	65	130	158	90	11	18.17	60	13	129	152	97.5	120
	15-90	2#	22	325	65	130	158	90	11	18.17	60	13	162	152	97.5	135
0.4KW 1/2HP	100-165	3#	28	360	90	140	178	120	11	20.8	68	17	162	178	116	135
	3-25	2#	22	345	65	130	158	90	11	18.17	60	13	162	152	97.5	135
0.75KW 1HP	30-120	3#	28	380	90	140	178	120	11	20.8	68	17	162	178	116	135
	125-150	4#	32	415	130	170	210	168	13	30.2	70	18	162	212	138.5	135
1.5KW 2HP	3-30	3#	28	385	90	140	178	120	11	20.8	68	17	192	178	116	135
	40-100	4#	32	445	130	170	210	168	13	30.2	70	18	192	212	138.5	145
	110-150	5#	40	490	150	210	265	195	15	36	84	24	192	250	160	145
2.2KW 3HP	50-80	5#	40	525	150	210	265	195	15	36	84	24	212	250	160	160
3.7KW 5HP	15-60	5#	40	565	150	210	265	195	15	36	84	24	212	250	160	160

KM系列

齿轮减速机

BKM HYPOID GEAR UNITS



规格:

- 包含5种机座规格电机, 客户可根据要求进行选用

性能:

- 产品使用功率从0.12-5.5kW
- 最大输出扭矩为750Nm
- 产品速比范围从7.48-302.5
- 传动效率达**90%**以上

可靠性:

- 箱体: 优质铝合金, 不生锈(机座:050-090); 铸铁, 可靠耐用(机座:110-130); 采用立式加工中心一次加工成型确保高精度及形状和位置公差
- 齿轮采用优质合金材料, 经表面硬化处理, 采用高精度磨齿机加工成形, 属硬齿面齿轮
- 采用准双曲面齿轮传动, 传动比大, 强度高
- BKM系列减速机安装尺寸与RV系列蜗轮蜗杆减速机完全兼容

Specification:

- Including 5 types motor, Customer can choose them according to the request

Performance:

- Service power range: 0.12-5.5kW
- Max. output torque: 750Nm
- Ratio range: 7.48-302.5
- Efficiency: more than **90%**

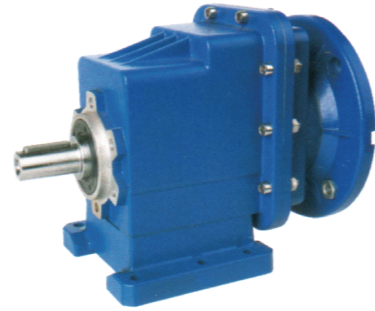
Reliability:

- Housing: die-cast aluminium alloy (frame size: 050-090); cast iron (frame size: 110-130); they made by the horizontal machining center in one-time-molding, ensures the accuracy and tolerancy of shape and position
- The gears are hard surface gear, made of high quality alloy, treated by surface hardening, and produced by high-precision grinding machine
- Driven by hypoid gear, has big ratios, high strength
- The mounting dimension of BKM series are compatible with RV series worm gear unit

KM系列齿轮减速机 KM HYPOID GEAR UNITS							
型号 Type	传动级数 Stages	速比 Ratios(i)	传动效率 (Efficiency)	最大电机规格 Motor size up to	最大电机功率 Motor power up to (kW)	最大输出扭矩 Torque MAX(Nm)	RV蜗轮蜗杆减速机型号 RV worm gear units type
KM0502	2	7.73-58.36	92%	90	1.5	130	RV050
KM0503	3	52.36-291.79	90%				
KM0632	2	7.6-60.5	92%	90	1.5	200	RV063
KM0633	3	52.48-302.5	90%				
KM0752	2	7.48-59.44	92%	100-112	4	350	RV075
KM0753	3	49.18-297.21	90%				
KM0902	2	7.48-59.04	92%	100-112	4	500	RV090
KM0903	3	49.18-295.18	90%				
KM1102	2	7.49-59.22	92%	132	7.5	750	RV110
KM1103	3	51.37-296.1	90%				
KM1302	2	7.49-59.22	92%	132	7.5	1500	RV130
KM1303	3	51.37-296.1	90%				

RC系列

减速机
BRC GEAR UNITS



规格:

- 包含4种机座规格电机, 客户可根据要求进行选用

性能:

- 产品使用功率从0.12-4kW
- 最大输出扭矩为500Nm
- 产品速比范围从3.66-54

可靠性:

- 箱体: 优质铝合金, 不生锈, 采用立式加工中心一次加工成型确保高精度及形状和位置公差
- 齿轮采用优质合金材料, 经表面硬化处理, 采用高精度磨齿机加工成形, 属硬齿面齿轮

Specification:

- Including 4 types motor, Customer can choose them according to the request

Performance:

- Service power range: 0.12-4kW
- Max. output torque: 500Nm
- Ratio range: 3.66-54

Reliability:

- Housing: die-cast aluminium alloy, they made by the horizontal machining center in one-time-molding, ensures the accuracy and tolerancy of shape and position
- The gears are hard surface gear, made of high quality alloy, treated by surface hardening, and produced by high-precision grinding machine

RC系列斜齿轮减速机 RC GEAR UNITS										
RC01					RC02					
i	63B5	71B5 71B14	80B5 80B14	90B5 90B14	i	63B5	71B5 71B14	80B5 80B14	90B5 90B14	
53.33					54.00					
45.89					46.46					
40.10					40.60					
35.47					35.91					
28.50					28.88					
23.56					23.85					
20.75					20.08					
19.83					19.87					
17.86					17.10					
15.60					14.94					
14.62					14.81					
13.80					13.21					
11.90					12.05					
11.10					10.63					
9.81					9.93					
9.17					8.78					
7.72					7.39					
5.69					5.45					
4.63					4.43					
3.82					3.66					
RC03					RC04					
i	71B5	80B5 80B14	90B5 90B14	100B5 100B14	112B5 112B14	i	80B5 80B14	90B5 90B14	100B5 100B14	112B5 112B14
51.30						51.30				
44.18						44.18				
38.63						38.63				
34.20						34.20				
30.57						30.57				
24.99						24.99				
21.15						21.15				
19.24						19.24				
18.21						18.21				
15.93						15.93				
15.30						15.30				
14.10						14.10				
13.30						13.30				
12.60						12.60				
10.93						10.93				
10.30						10.30				
9.08						9.08				
7.93						7.93				
6.31						6.31				
5.48						5.48				
4.50						4.50				
3.74						3.74				

RV系列

减速机
RV WORM GEAR UNITS



规格:

- 包含10种机座规格电机, 客户可根据要求进行选用

性能:

- 产品使用功率从0.06-15kW
- 最大输出扭矩为3000Nm
- 模块化组合DRV, 速比范围从5-5000

可靠性:

- 箱体: 优质铝合金, 不生锈(机座:025-090); 铸铁, 可靠耐用(机座:110-150)
- 蜗杆采用优质合金材料, 经表面硬化处理, 齿面硬度56-62HRC
- 蜗轮采用优质耐磨锡青铜

Specification:

- Including 10 types motor, Customer can choose them according to the request

Performance:

- Service power range: 0.06-15kW
- Max. output torque: 3000Nm
- Modularization combination DRV, Ratio range: 5-5000

Reliability:

- Housing: die-cast aluminium alloy (frame size: 025-090); cast iron (frame size: 110-150)
- The worm shaft made of high quality alloy, treated by surface hardening the hardness up to 56-62HRC
- The worm wheel made of wearable stannum bronze alloy

RV系列减速机 RV WORM GEAR UNITS						
型号	速比	传动效率	最大电机规格	最大电机功率	最大输出扭矩	BKM高效型准双曲面齿轮减速机型号
Type	Ratios(i)	(Efficiency)	Motor size up to	Motor power up to(kW)	Torque MAX(Nm)	BKM hypoid gear units type
RV025	5-60	40-70%	56	0.09	16	/
RV030	5-80	40-70%	63	0.18	24	/
RV040	5-100	35-70%	71	0.37	52	/
RV050	5-100	35-70%	80	0.75	80	BKM050
RV063	7.5-100	35-65%	90	1.5	164	BKM063
RV075	7.5-100	35-65%	112	4	260	BKM075
RV090	7.5-100	35-65%	112	4	460	BKM090
RV110	7.5-100	35-65%	132	7.5	660	BKM110
RV130	7.5-100	35-65%	132	7.5	1590	BKM130
RV150	7.5-100	35-65%	160	15	1760	/

