



安徽威尔智能装备有限公司

Anhui Well Advanced Technology Co., Ltd

安徽威尔环保设备有限公司

Anhui Well Environmental Protection Technology Co., Ltd

Tel: +86 189 1227 0723

Email: Sales@wellrecycling.com

Web: www.wellepa.com www.waliepe.com

地址: 安徽省芜湖市鸠江区清水街道纬四路23号

Add: No. 23 Weisi Road, Jiujiang District, Wuhu, Anhui

WELL-Atech 威尔环保

目录 | CONTENTS

企业简介	Company Profile	03
单轴撕碎机	Single Shaft Shredder	07
-H系列	Single Shaft Shredder - H Series	11
双轴撕碎机	Double Shaft Shredder	15
-S系列	Double Shaft Shredder - S Series	19
卧式打包机	Horizontal Baler	23
金属打包机	Metal Baler	25
铜米机	Cable Granulator	27
大件垃圾解决方案	Bulky Waste Recycling Solution	29
废旧轮胎解决方案	Scrap Tires Recycling Solution	31
废旧金属解决方案	Scrap Metal Recycling Solution	33
生物质秸秆解决方案	Biomass Straw Recycling Solution	35
混合生活垃圾解决方案	MSW Recycling Solution	37
工业垃圾解决方案	Industrial Waste Recycling Solution	39
全球业务	Global Business	41

智造未来，共创无限可能

INTELLIGENT FUTURE, ANYTHING IS POSSIBLE.



企业愿景

成为固废处理行业领先者

Enterprise Vision

Become a pioneer in the solid waste treatment industry

企业价值观

服务客户，品质为先

Enterprise Values

Serve Customers, Quality First

安徽威尔智能装备有限公司

ANHUI WELL ADVANCED TECHNOLOGY CO., LTD

安徽威尔环保设备有限公司

ANHUI WELL ENVIRONMENTAL PROTECTION TECHNOLOGY CO.,LTD

安徽威尔环保设备有限公司（简称威尔环保），是一家集固废处理设备研发、生产制造、销售服务于一体的新型企业。主要生产并经营撕碎机及固废回收整线处理设备。威尔环保通过了ISO9001质量体系认证，并获得多项目国家专利。公司坐落在美丽的安徽省芜湖市，长江三角洲中心区27城之一，华东重要的科研教育基地和工业基地，占据有利的经济和地理环境优势。

2023年，公司调整组织架构，新增业务板块，成立了安徽威尔智能装备有限公司（简称威尔智能）。威尔智能开拓更多固废处理及回收领域的相关设备，包含打包、分选、输送、运维系统等设备，来满足固废处理领域日益细分化、资源化的处理需求。

威尔智能装备始终秉承“创新为先，质量为重”的使命，立足固废处理装备业务，不断贴近客户需求，积极参与市场竞争，努力打造出市场认可的行业先行者企业。

Anhui Well Environmental Protection Technology Co.,Ltd.specializes in manufacturing recycling machines, including shredders and complete recycling systems. Based in Wuhu, Anhui Province, we are ISO9001 certified and hold multiple national patents.

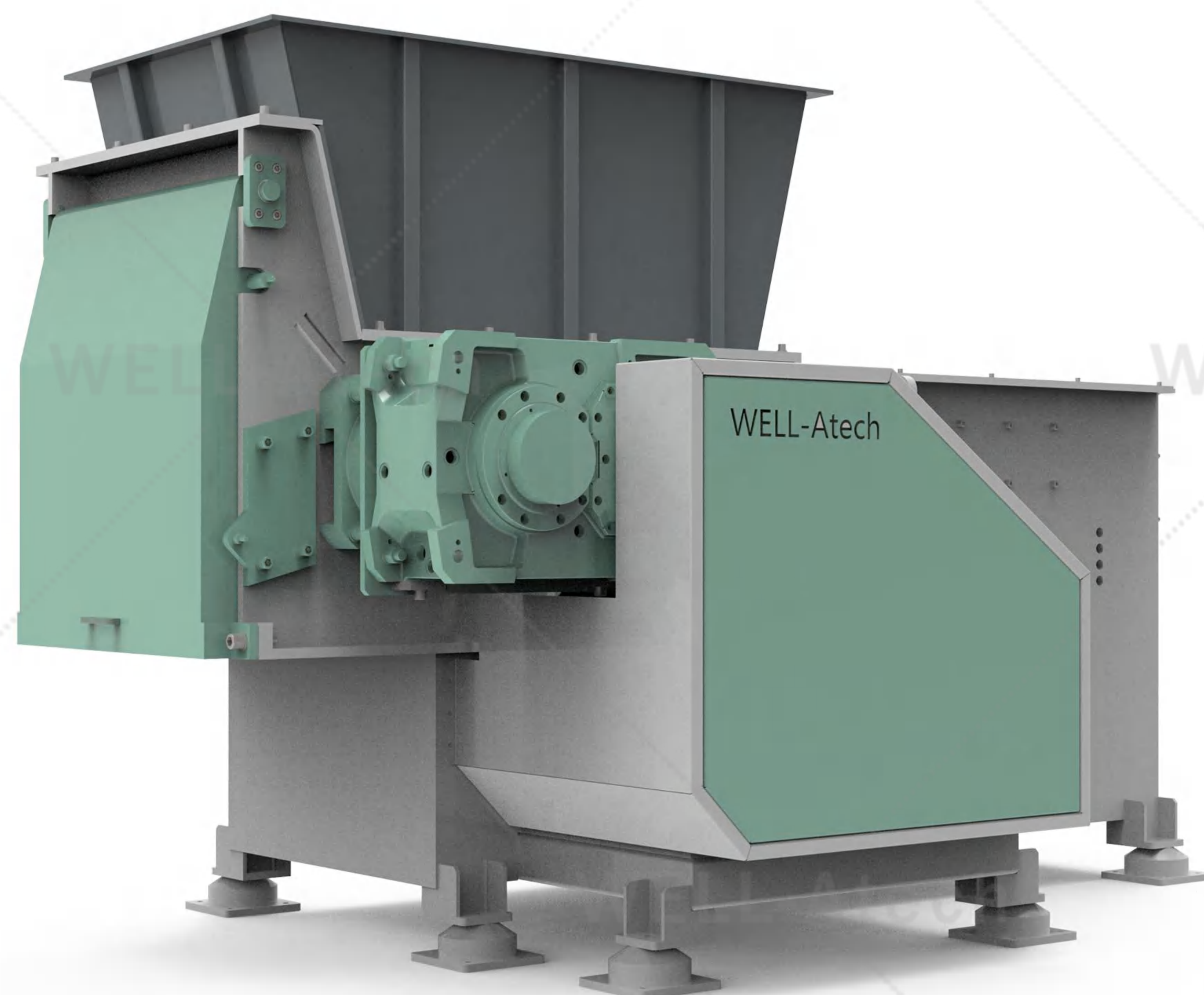
In 2023, our company restructured and established Anhui Well Advanced Technology Co.,Ltd (referred to as "Well-Atech"). Well-Atech focuses on developing additional equipment for solid waste treatment and recycling , including balers, sorting systems, conveyors, and maintenance systems, to meet the increasingly specialized and resource-oriented needs of the industry.

Well-Atech upholds the mission of "innovation first, quality foremost." Focusing on solid waste treatment equipment, we continuously align with customer needs, actively compete in the market, and strive to become an industry leader recognized by the market.



单轴撕碎机

Single Shaft Shredder

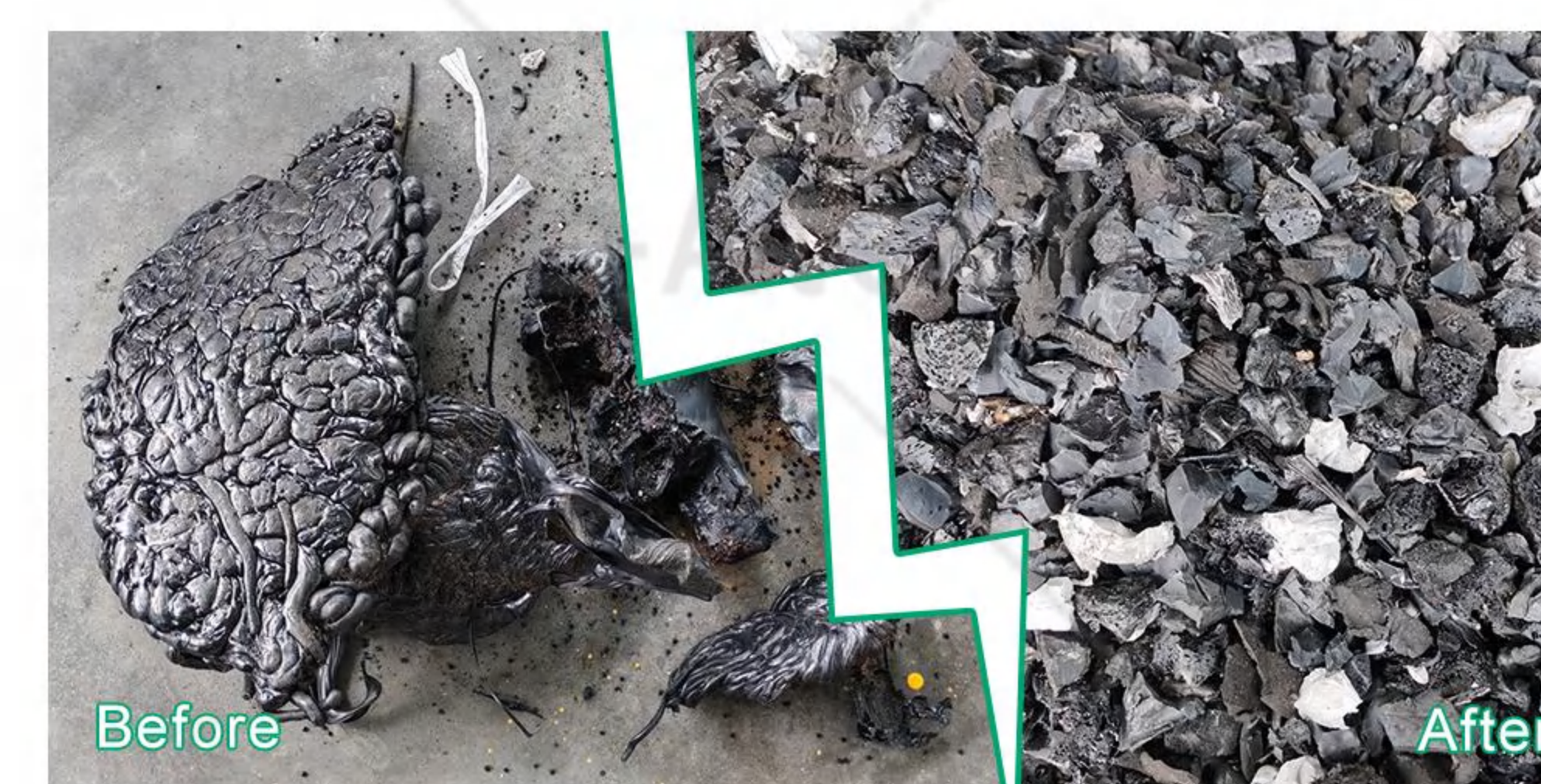


WES系列单轴撕碎机应用于各行业中小型物料的细化和废料回收，主要处理高硬度、高韧性的胶头料、塑料制品、木材、工业废纸等，撕碎后的颗粒尺寸均匀。该系列撕碎机转速低、扭矩大、结构紧凑，在恶劣的工业环境下使用能保持稳定性和耐用性。筛网结构与动刀排布可以根据物料特性及出料要求进行选配，以达到满意的效果。

The WES series single-shaft shredder is applied in the refinement and waste recovery of small to medium-sized materials across various industries. It primarily handles high-hardness, high-toughness rubber materials, plastic products, wood, and industrial waste paper, producing uniformly sized particles after shredding. This series of shredders features low rotational speed, high torque, and a compact structure, maintaining stability and durability in harsh industrial environments. The screen structure and blade layout can be customized based on the material characteristics and discharge requirements to achieve satisfactory results.

市场应用 Application

- ❑ 塑料：注塑、挤出、吹膜等通用塑料、机头料等
 - ❑ 化纤：地毯、劳保服等
 - ❑ 工业边角料：海绵、纺织品、皮革、木材等
 - ❑ 纸：文件用纸、包装纸、硬纸板等
 - ❑ 电缆：铜芯、铝芯电缆及复合材料电缆
 - ❑ 铝：易拉罐、铝屑等
- ❑ Plastic: Plastic film, PET bottles, Plastic lump etc
 - ❑ Chemical Fiber: Carpet, Labor protection clothing etc
 - ❑ Industrial Waste: Sponge, Textile, Leather, Wood etc
 - ❑ Paper: Document, Packing paper, Cardboard etc
 - ❑ Cables: Copper cable, Aluminum cable, Composite cable etc
 - ❑ Aluminum: UBC, Aluminum shaving etc



▲ 胶头料 Plastic Lump



▲ 木材 Wood

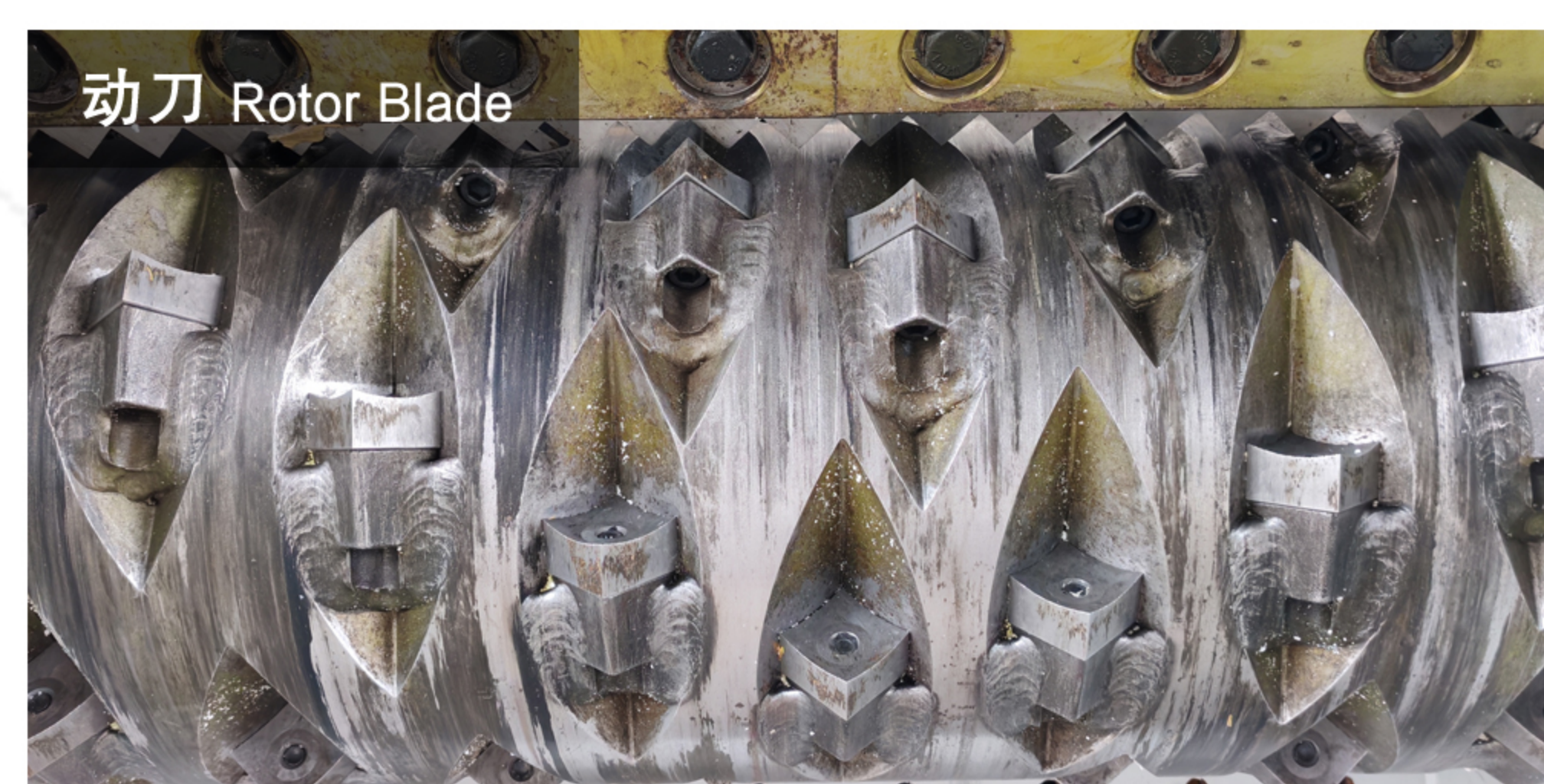


▲ 纸盒箱 Cardboard



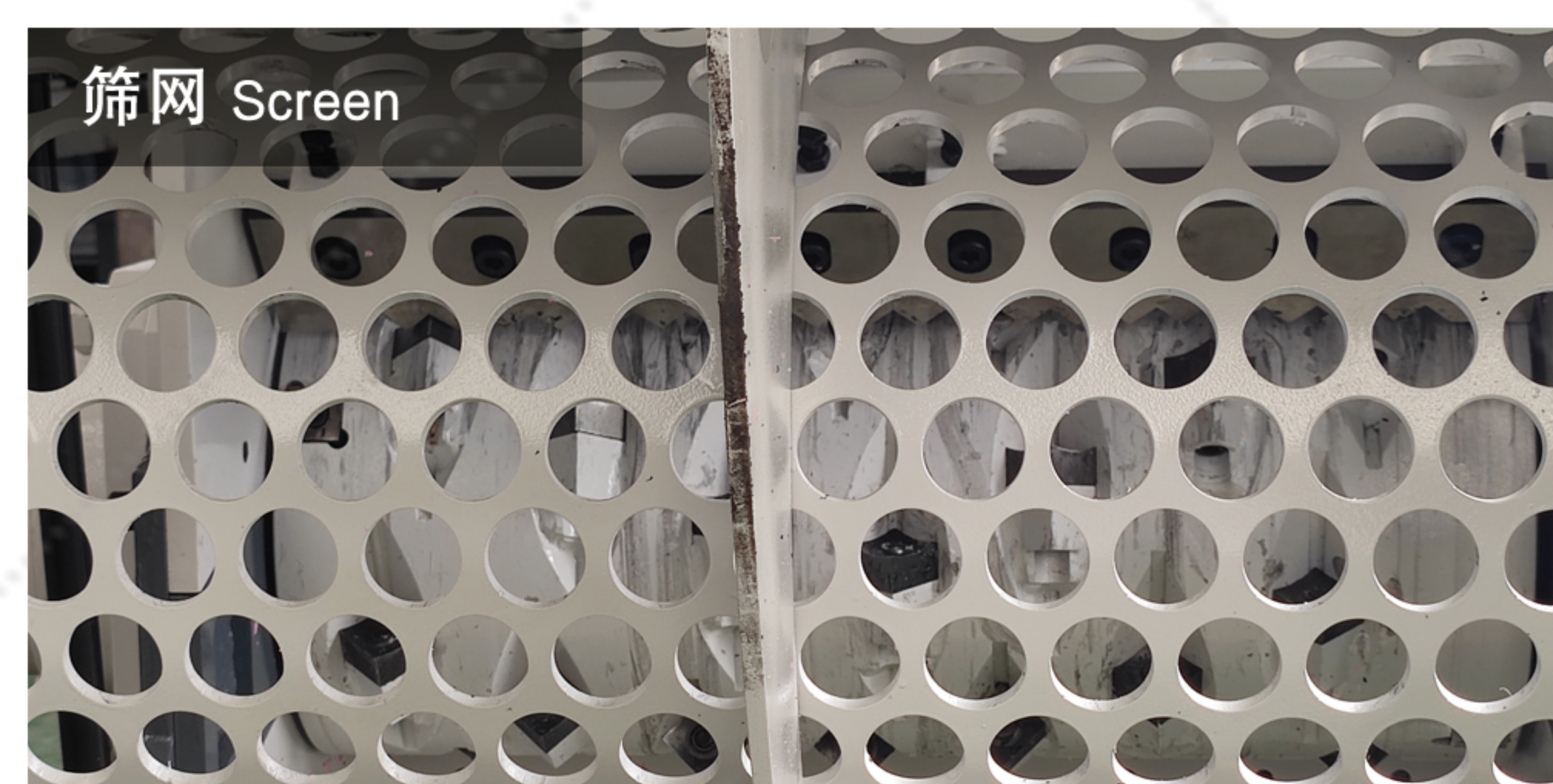
▲ 纺织品 Textiles

性能特点 Features



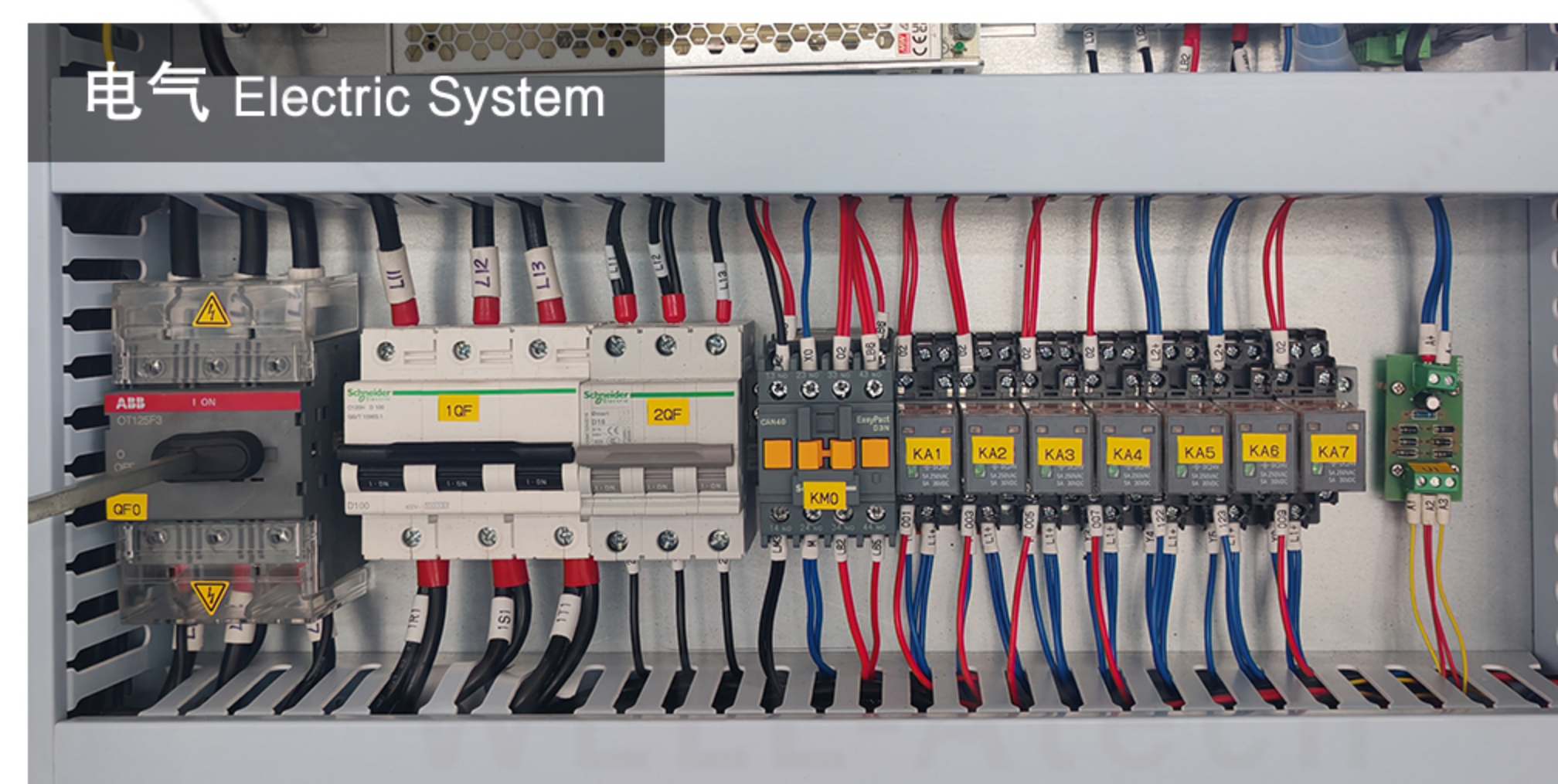
动刀 Rotor Blade

- ❑ 动刀采用DC53合金，高硬度，耐磨耐用。
Rotor blades are made of DC53 alloy steel, high hardness, wear resistant and durable.
- ❑ 动刀可四面使用后再更换。
Rotor blades can be used four times by changing its angle then we can replace it.



筛网 Screen

- ❑ 筛网孔径控制出料尺寸，可选尺寸20-40mm。
Screen mesh size determines the end product size, 20 to 40mm available.
- ❑ 针对轻质物料，另有筛网可选。
Unique screen design for film and other light material.



电气 Electric System

- ❑ 主要的电气控制元件均采用西门子和施耐德等国际品牌，质量可靠。
Main electrical control components adopt Siemens, Schneider and other reliable international brands.



推料箱 Pusher

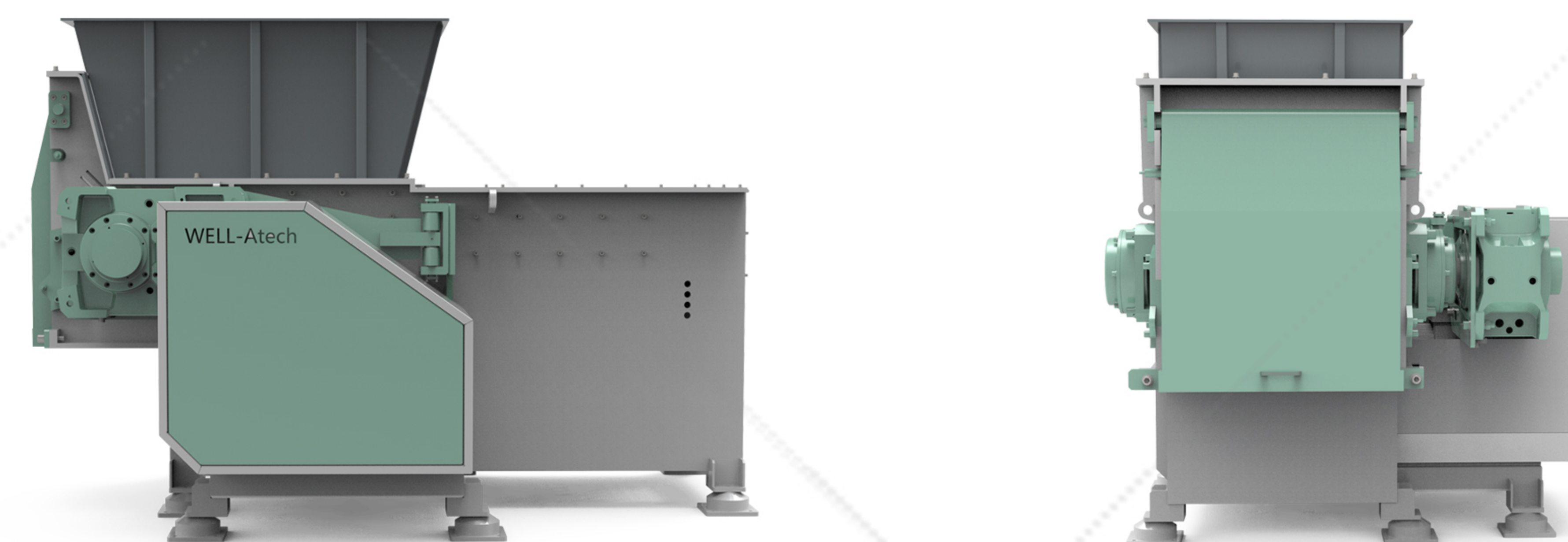
- ❑ 推料箱匀速推进，提高破碎效率。
Pushing evenly to improve the crushing efficiency.
- ❑ 推料箱采用斜面设计，减少滞留物料。
Slanted pusher eliminates residue.



电控 Electrical Control

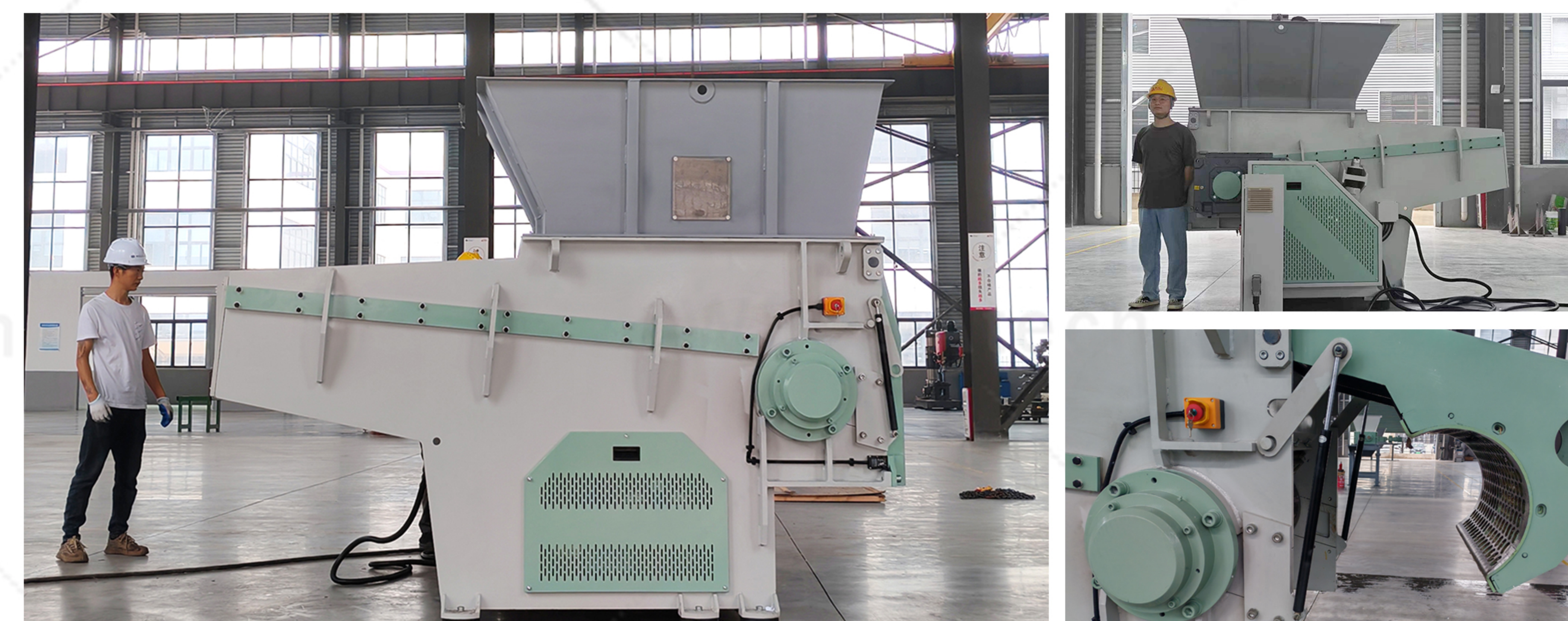
- ❑ PLC自动化控制，操作简单方便。
Equipped with PLC system to achieve automatic control. Easy operation.
- ❑ 自动过载保护，避免机器过载和卡死。
Equipped with automatic overload protection to avoid machine overload and stuck.

型号参数 Specification



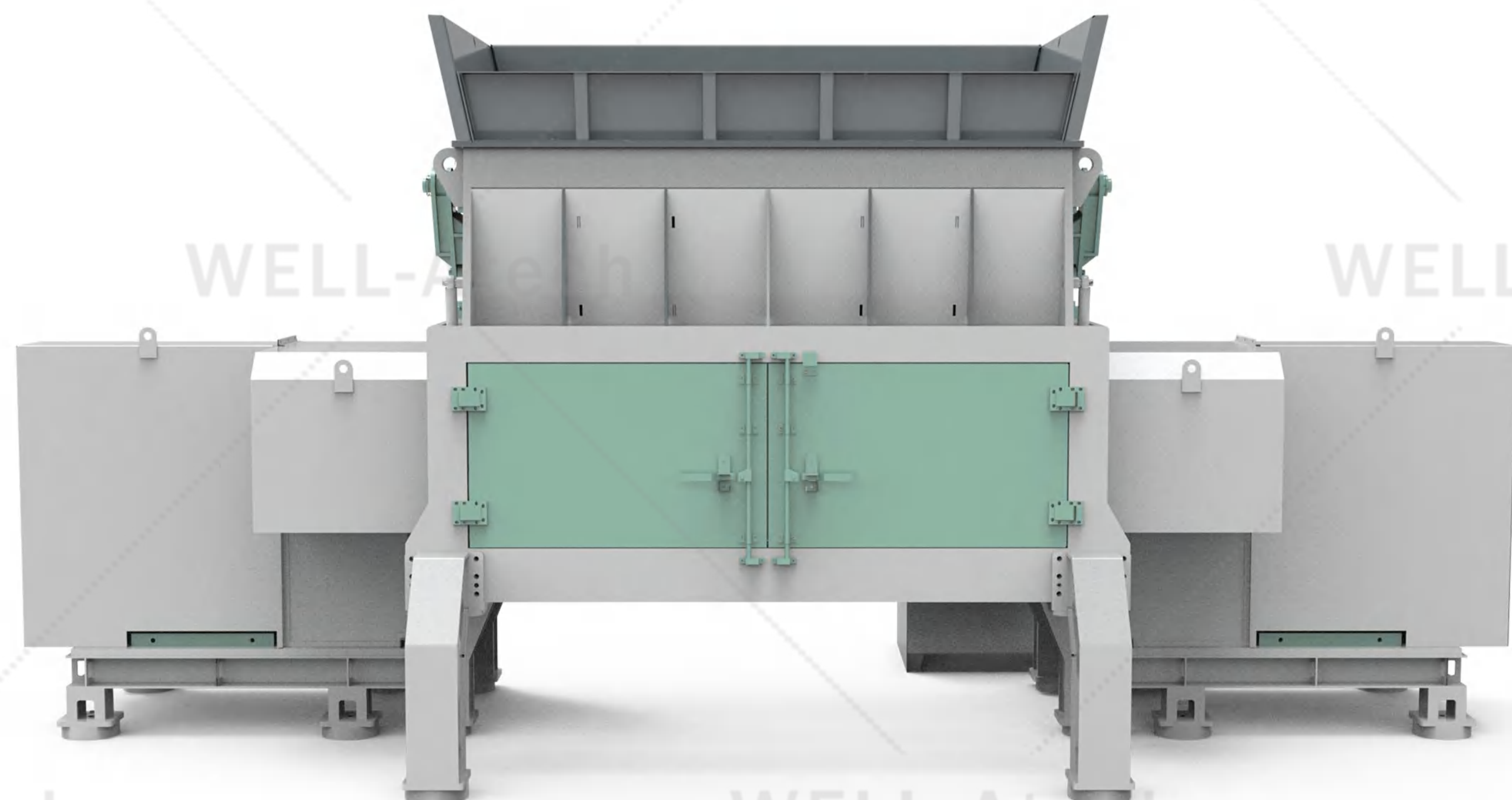
项目 Item 型号 Model	WES-600	WES-800	WES-1200	WES-1400
刀箱尺寸 Crushing Chamber (mm)	600*500	800*800	1200*850	1400*850
刀辊直径 Rotor Diameter (mm)	250	400	400	400
筛网孔径 Screen Opening (mm)	φ40 (Customizable)			
功率 Power (kW)	18.5+2.25	37/45+3.75	55+5.5	75+5.5
外形尺寸 L*W*H Dimension (mm)	1760*1300*1850	2850*1760*2210	2850*2560*2330	2850*2760*2330
整机重量 Weight (kg)	1750	4150	5300	5900

项目现场 Project Case



单轴撕碎机-H重型

Single Shaft Shredder - H Series



WES-H系列单轴撕碎机应用于减容各类大型废弃物及工业垃圾的资源化，处理产能约15-20吨/小时。设备破碎室加长，整捆打包物料可以直接破碎；设备配备圆弧形的摆臂压料装置，可以提高破碎效率；设备正面设有敞开式维护门，实现设备内部可视化，方便清理维护。

The WES-H series single-shaft shredder is used for the volume reduction and resource recovery of various large waste and industrial garbage, with a processing capacity of approximately 15-20 tons per hour. The shredding chamber of the equipment is extended, allowing baled material to be directly shredded. The equipment is equipped with an arched swing-arm pressing device to enhance shredding efficiency. The front of the equipment is equipped with an open maintenance door, allowing for internal visualization and facilitating cleaning and maintenance.

市场应用 Application

- 塑料：散装或者压包后的注塑、挤出、吹膜等通用塑料、机头料等
- 秸秆：散装或者压包后的稻草秸秆、豆类秸秆等
- 工业边角料：散装或者压包后的海绵、纺织品、皮革等
- 纸：散装或者压包后的文件用纸、包装纸、硬纸板等
- 铝：散装或者压包后的易拉罐、铝屑等
- 混合垃圾和工业废物：RDF/SDF/SRF预处理

- Plastic: Plastic film, PET bottles, Plastic lump etc
- Straw: Loose or compressed straw, Legume straw etc
- Industrial Waste: Sponge, Textile, Leather, Wood etc
- Paper: Document, Packing paper, Cardboard etc
- Aluminum: UBC, Aluminum shaving etc
- Mixed Household & Commercial Waste: RDF/SDF/SRF Pretreatment



▲ 秸秆 Straw Bales



▲ 塑料瓶 PET Bottles



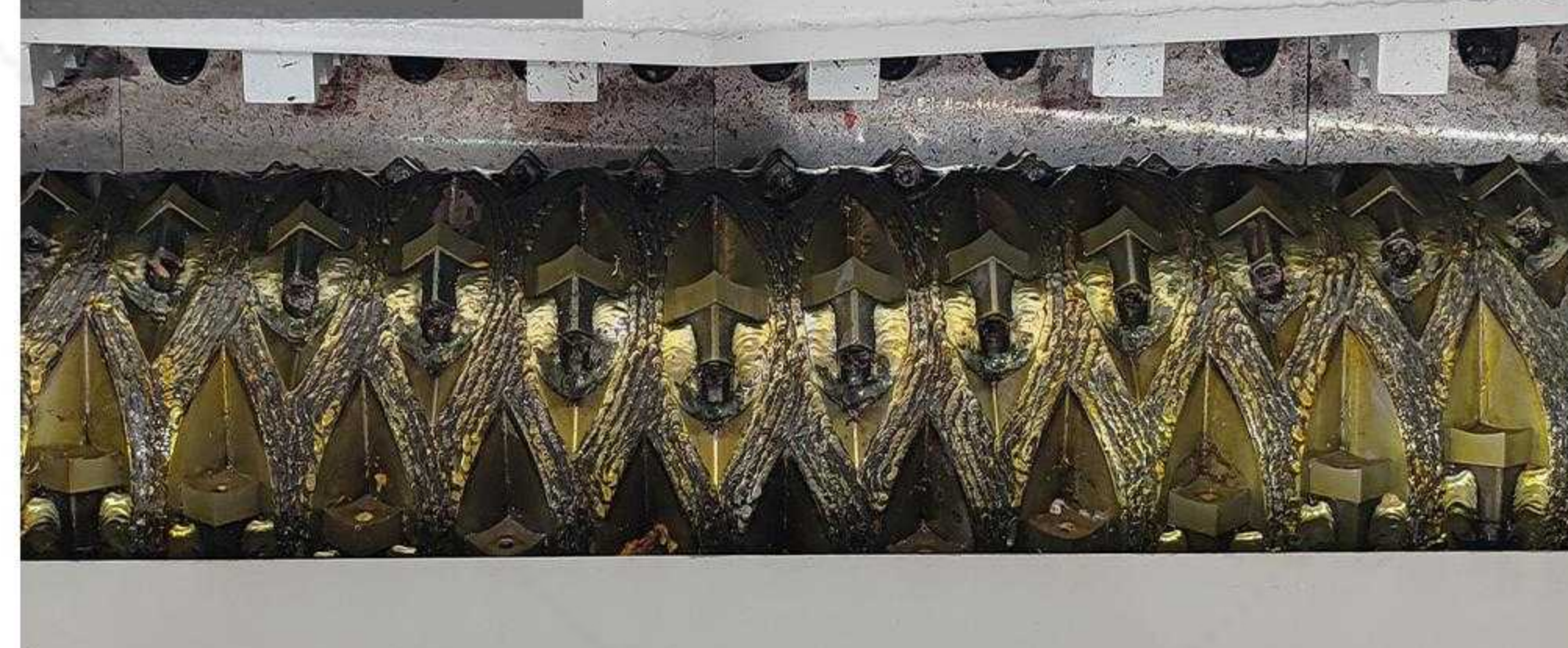
▲ 纸盒箱 Cardboard



▲ 纺织品 Textiles

性能特点 Features

动刀 Rotor Blade



- 进口高硬度合金动刀，两面可用，使用寿命长。
High-strength alloy rotor blade has long service life, can be used twice.
- 独特动刀排布，破碎效率高。
Unique rotor blade layout ensures high crushing efficiency.

推料箱 Pusher



- 推料箱匀速推进，提高破碎效率。
Pushing evenly to improve the crushing efficiency.
- 推料箱采用斜面设计，减少滞留物料。
Slanted pusher eliminates residue.

筛网 Screen



- 可选圆形/六角筛网，控制出料尺寸。
Circular/Hex screen mesh is available for better end product size control.
- 筛网更换方便快捷。
It is easy to complete the replacement.

电控 Electrical Control



- PLC自动化控制，操作简单方便。
Equipped with PLC system to achieve automatic control. Easy operation
- 负载监测，保证工作安全。
Monitor key parameters to ensure the safety.

电气 Electric System



- 主要的电气控制元件均采用西门子和施耐德等国际品牌，质量可靠。
Main electrical control components adopt Siemens, Schneider and other reliable international brands.

型号参数 Specification



项目 Item 型号 Model	WESH-1500	WESH-2000	WESH-2200	WESH-3000
刀箱尺寸 Crushing Chamber (mm)	1700*1500	1700*2000	1700*2200	1970*3000
刀辊直径 Rotor Diameter (mm)	460	460	600	800
筛网孔径 Screen Opening (mm)	φ40 (Customizable)			
功率 Power (kW)	90+5.5	75+75+7.5	132+132+11	220+220+11
外形尺寸 L*W*H Dimension (mm)	2550*3750*2750	2550*4350*2750	2750*5640*2900	2850*6950*3700
整机重量 Weight (kg)	13000	15500	21000	30000

项目现场 Project Case



双轴撕碎机

Double Shaft Shredder



WED系列双轴撕碎机，采用单电机+减速机驱动，通过齿轮分速驱动两套刀轴同时运转，实现物料的剪切和撕碎，WLD系列是轻载荷剪切式破碎机，外观体型紧凑，占地面积小，但其核心力量强大，配备高合金耐磨刀具，42CrMo传动轴，可拆卸式定刀等。

WED series double shaft shredder driven by single motor and gearbox. Drive two shafts at the same time by gears to achieve the shredding of material. This series is light load shearing type shredder, which has compact structure and small footprint. But it has strong core strength, adopts high alloy steel blades, 42CrMo shaft, and detachable counter blade design.

市场应用 Application

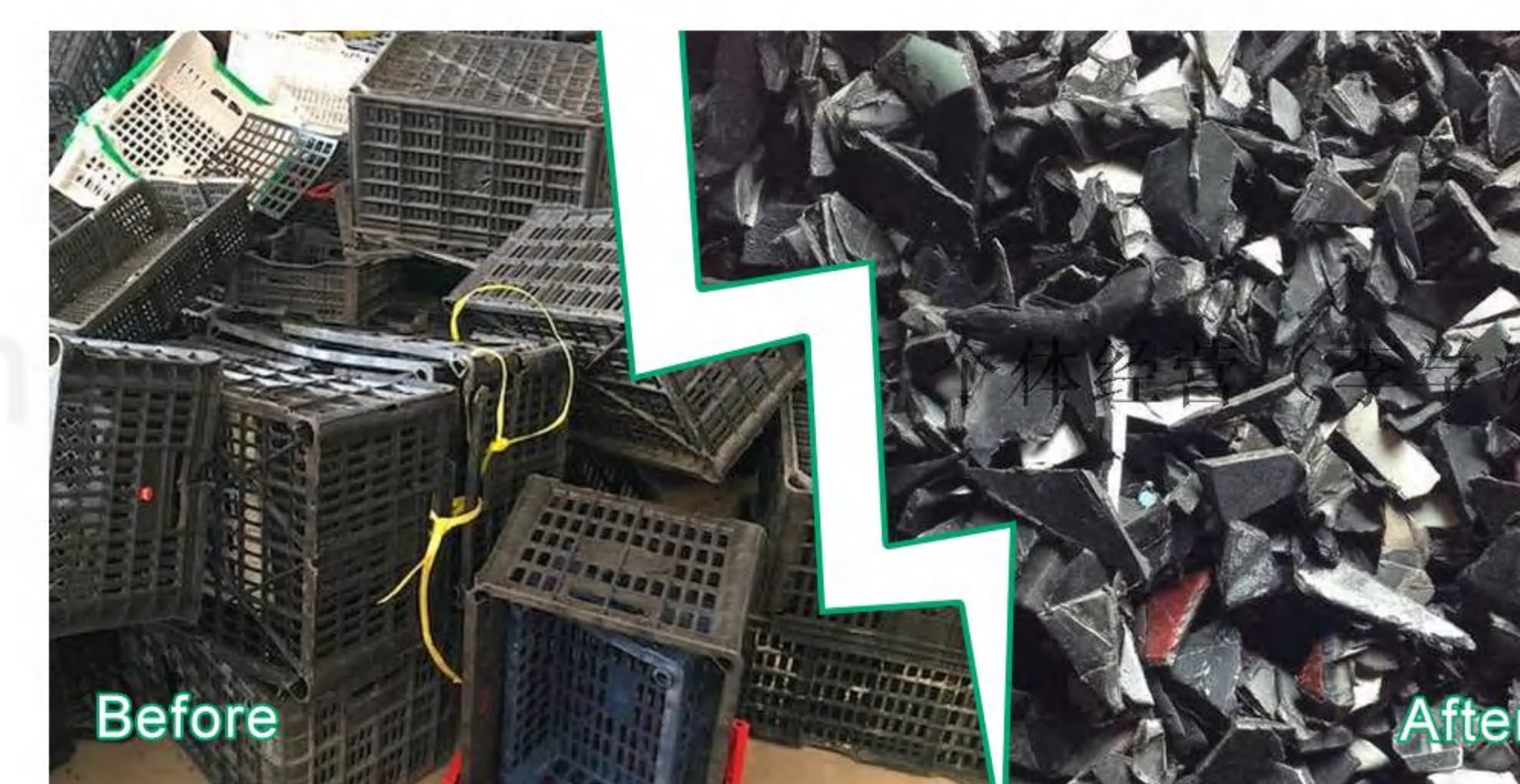
- 餐厨垃圾：果蔬废料、厨余垃圾、农贸菜市场垃圾等
 - 塑料垃圾：饮料瓶、塑料壶、塑料桶、塑料筐等
 - 电子垃圾：旧硬盘、PCB板、键盘、鼠标、手机、CD盘等
 - 金属垃圾：铁屑、易拉罐、油漆桶、轻薄金属料等
 - 医疗垃圾：注射器类废物、药品废物、小件医疗器械、乳胶材料废品、废弃口罩
 - 工业垃圾：旧衣服、皮革、纺织品边角料、地毯厂废布料、一般工业垃圾等
 - 化学品：scr脱销催化剂、聚酰胺腊等
- Kitchen : Fruit and vegetable waste, Kitchen waste, Wet market waste etc
 - Plastic : Plastic bottles, Plastic jugs, Plastic buckets, Plastic baskets etc
 - Electronic : Old hard disk, PCB boards, Keyboards, Mice, Mobile phones, CDs etc
 - Metal : Iron shavings, Cans, Paint buckets, Light metals etc
 - Paper : Used cartons, Cardboard, Newspapers, Books, Documents, Brochures etc
 - Industrial : Old clothes, Leather, Textile scraps, Carpet factory waste fabric etc



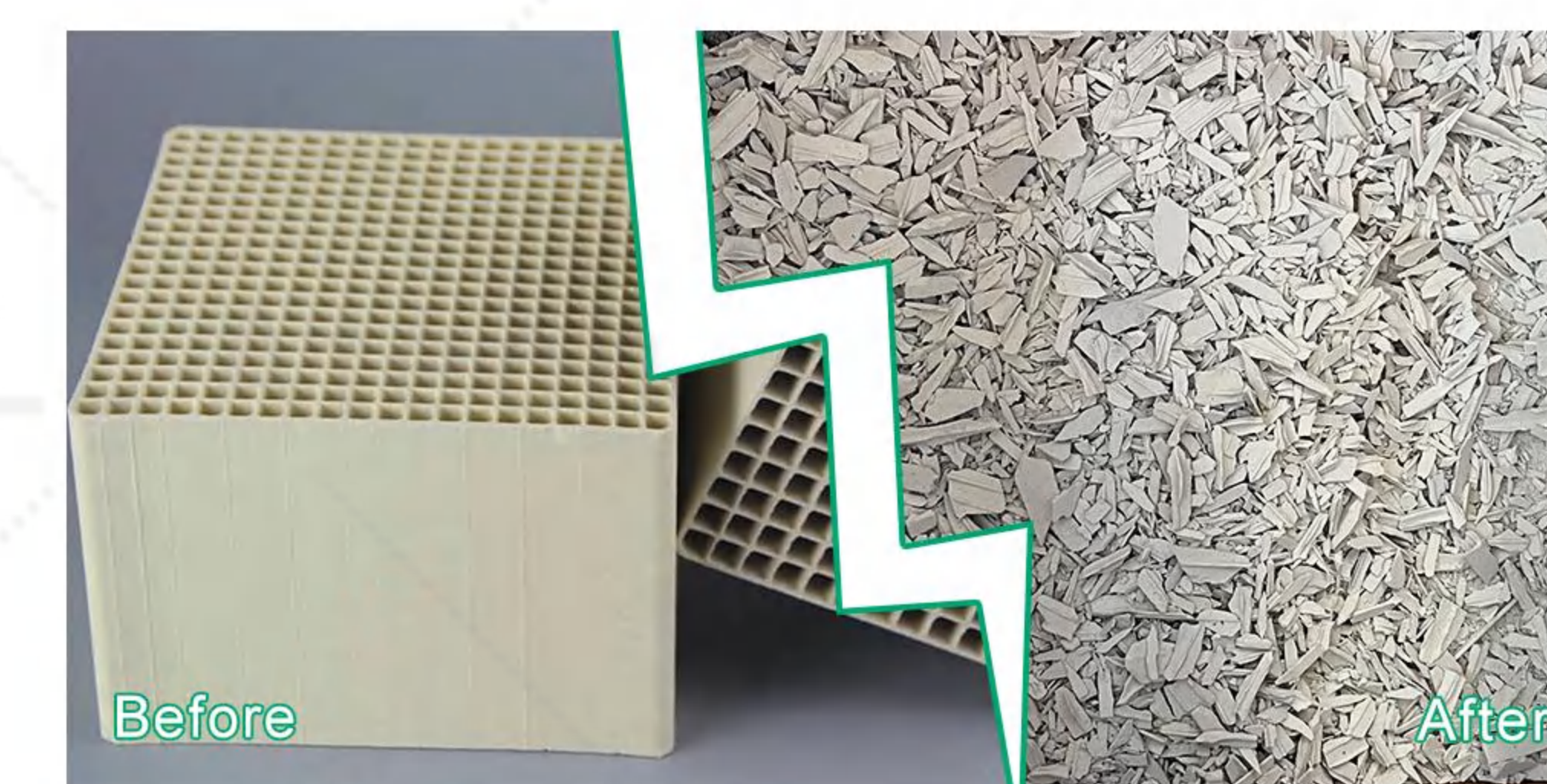
▲ 有机垃圾 Organic Waste



▲ 电子垃圾 E-waste



▲ 塑料垃圾 Plastic



▲ 新型材料 New Materials

性能特点 Features



- ❑ DILLIGUR / HARDOX 进口 NiCrMo 高合金钢。
DILLIGUR / HARDOX Imported raw material NiCrMo High alloy steel.
- ❑ 刀片厚度/齿数可选。
Adjustable blade thickness & Teeth number.



- ❑ 刀箱两侧设有定刀，防物料缠绕。
Counter blades on both sides of shredding chamber can prevent material from winding.
- ❑ 可独立拆卸，维护方便。
Individually removable design for easy maintenance.



- ❑ 采用42CrMo高合金钢，机械强度高，抗冲击力强。
Adopts 42CrMo high alloy steel, ensure its good mechanical strength and shock resistance.
- ❑ 轴面采用六角设计，定位精度高，连接时受力均匀。
Hexagonal axial surface design has high positioning accuracy and uniform force while connection..



- ❑ PLC自动化控制，操作简单方便。
Equipped with PLC system to achieve automatic control. Easy operation.
- ❑ 自动过载保护，避免机器过载和卡死。
Equipped with automatic overload protection to avoid machine overload and stuck.



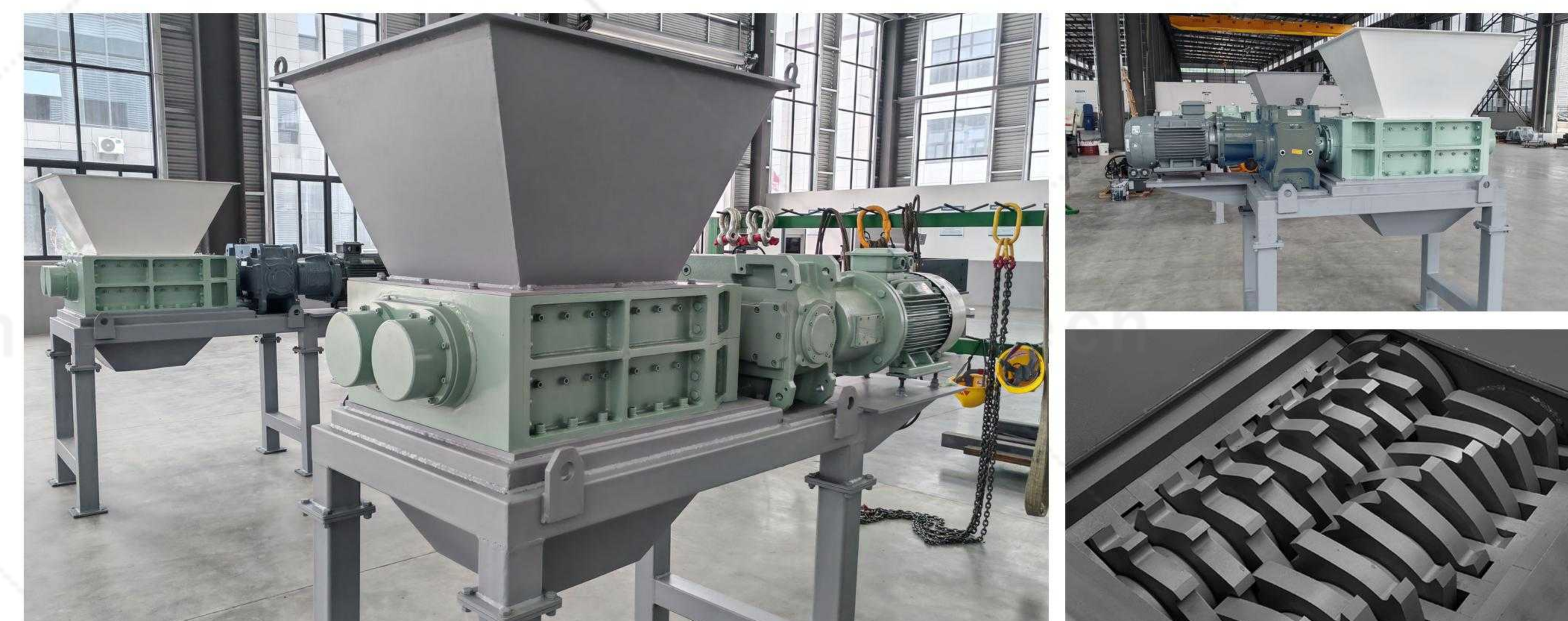
- ❑ 主要的电气控制元件均采用西门子和施耐德等国际品牌，质量可靠。
Main electrical control components adopt Siemens, Schneider and other reliable international brands.

型号参数 Specification



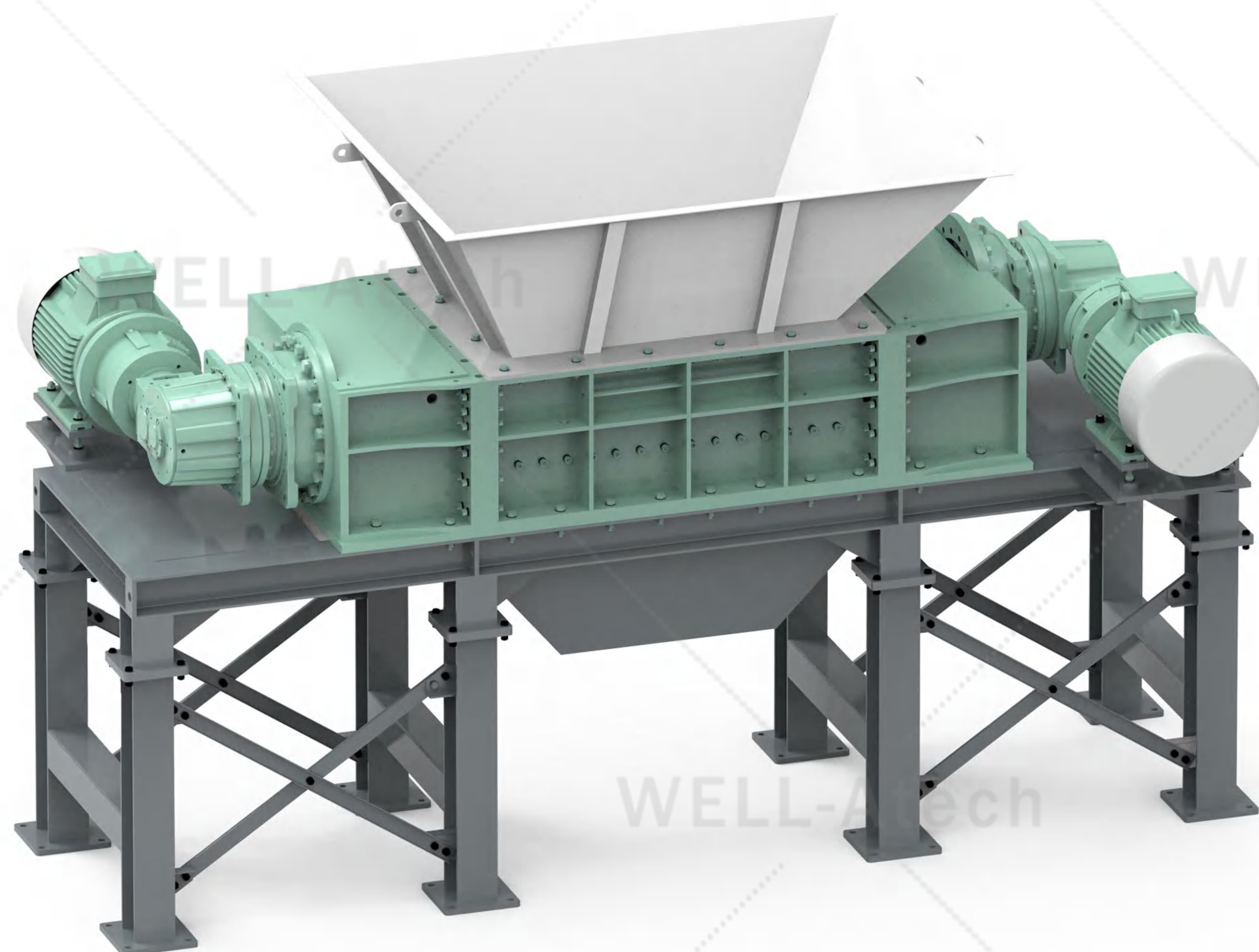
项目 Item 型号 Model	WED-450	WED-600	WED-800	WED-1000
刀箱尺寸 Crushing Chamber (mm)	350*450	600*550	800*600	1000*700
刀片直径 Rotation Diameter (mm)	φ234	φ280	φ305	φ330
刀片厚度 Blade Thickness (mm)	20	20	20/40	20/40
功率 Power (kW)	5.5	15	22	30
外形尺寸 L*W*H Dimension (mm)	1320*800*1800	2240*1050*2020	2500*1120*2230	2510*1865*2550
整机重量 Weight (kg)	600	1200	1800	2200

项目现场 Project Case



双轴撕碎机-S系列

Double Shaft Shredder - S Series



WED-S系列双轴剪切式破碎机，采用“双电机+双行星减速机”驱动，利用两个相对旋转的刀具之间相互剪切、撕裂原理对物料进行破碎。设备动力强劲，运行稳定性高。常被用于城市生活垃圾处置、资源再生、垃圾焚烧预处理等环保领域。

WED-S series double shaft shredder driven by double motor and double planetary gearbox. Based on the principle of shearing, the material is shredded by relative rotation of two sets blades. Since the strong power and high stability of this shredder, it is often used for MSW treatment, resource regeneration, pretreatment of refuse burning and other environmental protection field.

市场应用 Application

- ❑ 大件垃圾：废旧沙发、床垫、桌椅、家具、床架、木柜、木门等。
 - ❑ 居民生活垃圾（不含铁块、石头、陶瓷等高硬度物料）。
 - ❑ 工业垃圾：旧衣服、皮革、纺织品边角料、地毯厂废布料、一般工业垃圾等。
 - ❑ 生物质秸秆：稻草秸秆、竹子、木材、玉米秸秆、高粱秸秆等。
 - ❑ 金属垃圾：报废汽车外壳、铝合金压铸件、废旧家用电器、轻薄金属废料、汽车轮毂等。
 - ❑ 危险固废：医疗废弃物、油漆淤泥、放射性废物、危废油桶、吨袋等。
 - ❑ 纸厂垃圾：纸厂轻渣、纸厂绞绳、纸厂下脚料等。
- ❑ Bulky Waste: Sofa, Mattresses, Table and chair, Furniture, Bed frames, Wooden cabinet etc.
 - ❑ Domestic Waste
 - ❑ Industrial Waste: Old clothes, Leather, Textile scraps, General industrial waste etc.
 - ❑ Biomass Straw: Rice straw, Wood, Corn straw, Bagasse, Coconut shell etc.
 - ❑ Hazardous Solid Waste: Medical waste, Radioactive waste, Oil drums, Jumbo bags etc.
 - ❑ Metal Waste: Scrap car shell, Aluminum alloy die-casting parts, Household appliances etc.
 - ❑ Scrap Tire: Scrap car tires.



▲ 沙发 Sofa



▲ 轮胎 Tires



▲ 木托盘 Wooden pallets



▲ 油桶 Oil drum

性能特点 Features



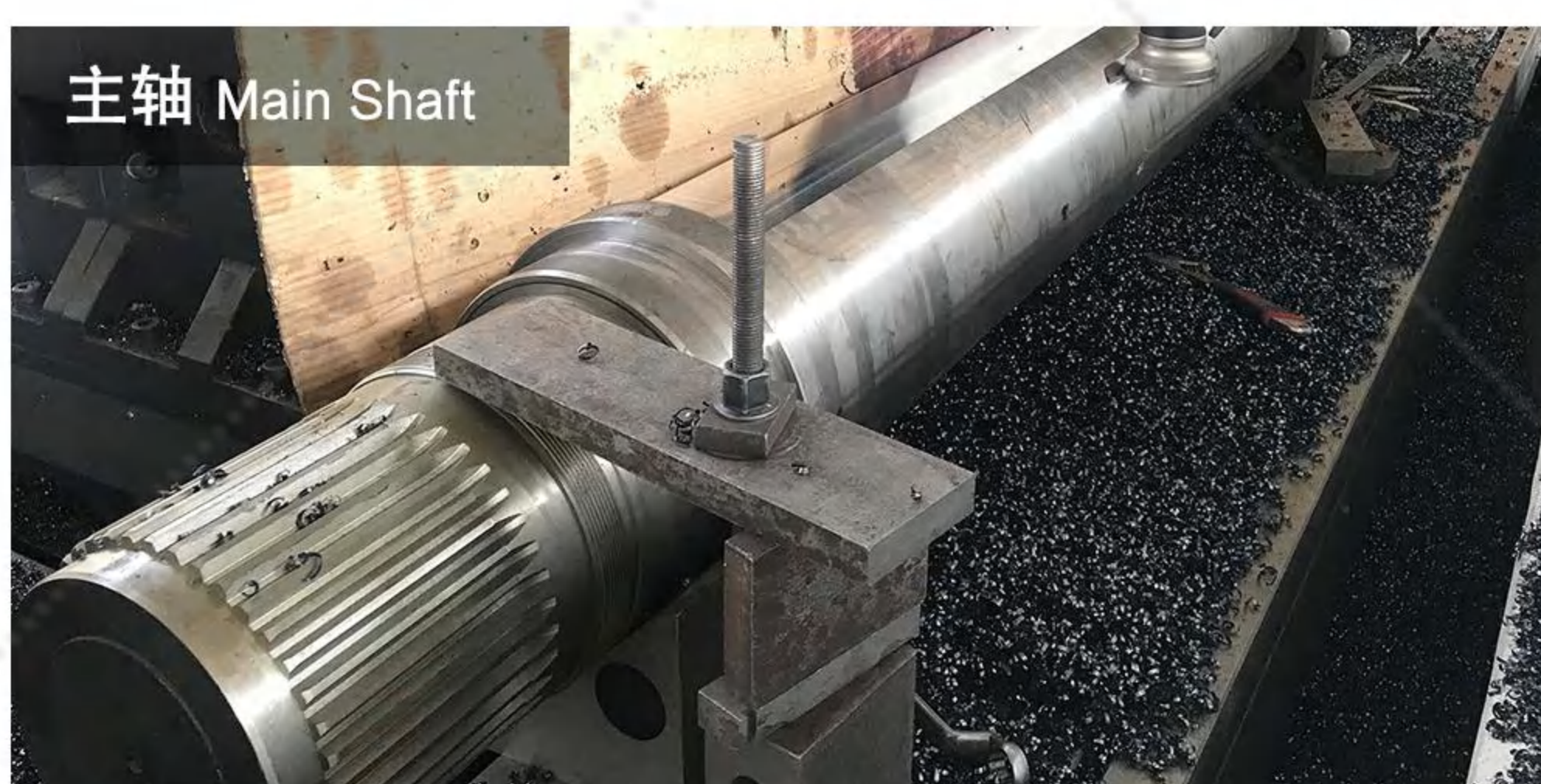
动刀 Rotor Blade

- ❑ DILLIGUR / HARDOX 进口 NiCrMo 高合金钢。
DILLIGUR / HARDOX Imported raw material NiCrMo High alloy steel.
- ❑ 刀片厚度/齿数可选。
Adjustable blade thickness & Teeth number.



定刀 Counter blade

- ❑ 刀箱两侧设有定刀，防物料缠绕。
Counter blades on both sides of shredding chamber can prevent material from winding.
- ❑ 可独立拆卸，维护方便。
Individually removable design for easy maintenance.



主轴 Main Shaft

- ❑ 采用42CrMo高合金钢，机械强度高，抗冲击力强。
Adopts 42CrMo high alloy steel, ensure its good mechanical strength and shock resistance.
- ❑ 花键和六方轴，扭力分布均匀，延长主轴寿命。
Splined blade teeth with hex shaft for uniform torque distribution to extend the life of the spindle.



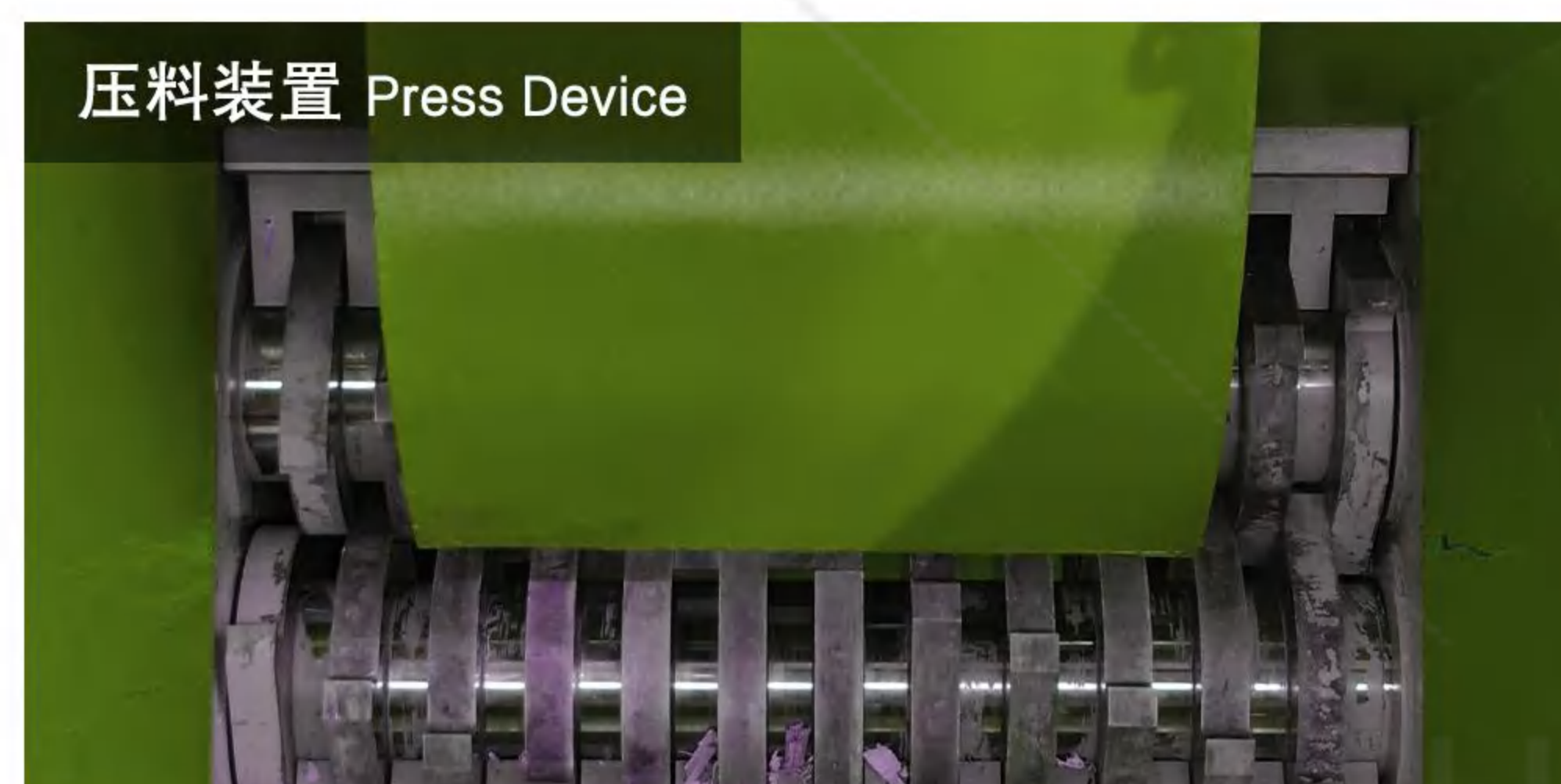
电控 Electrical Control

- ❑ PLC自动化控制，操作简单方便。
Equipped with PLC system to achieve automatic control. Easy operation.
- ❑ 负载监测，保证工作安全。
Monitor key parameters to ensure the safety.



行星减速机 Planetary Gearbox

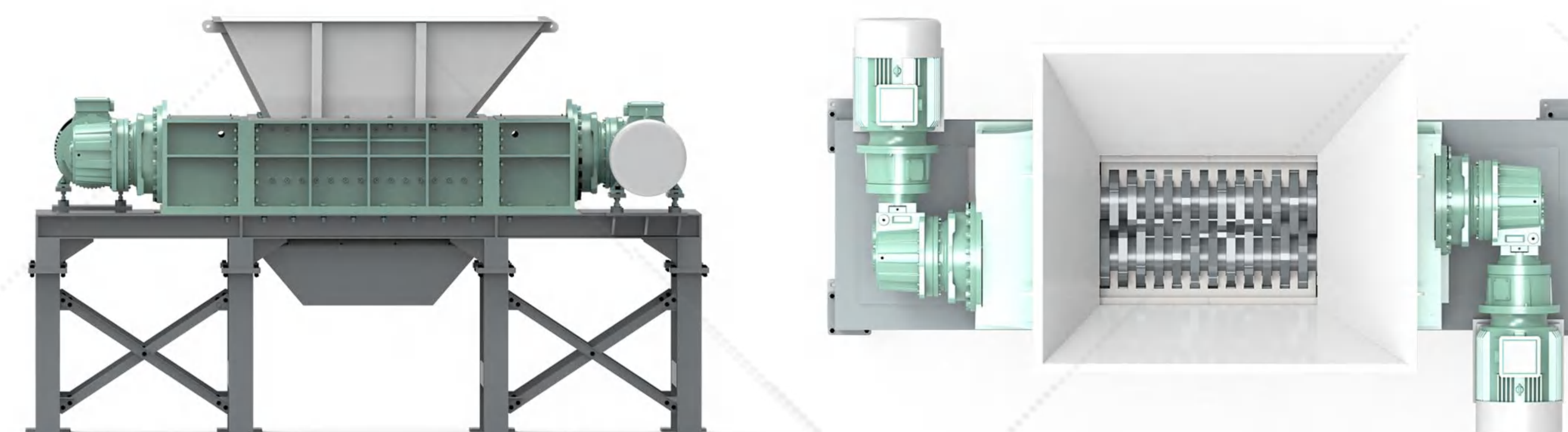
- ❑ 结构紧凑，体积小，传递功率大，承载能力高。
Compact structure, small size, high transfer power, high load-carrying capacity.
- ❑ 传动效率高，运行平稳，抗冲击力和抗震能力强。
High transmission efficiency, stable operation, strong shock resistance.



压料装置 Press Device

- ❑ 可配压料装置，提高破碎效率，增加产能。
Can add press device to improve the shredding efficiency and increase the production capacity

型号参数 Specification



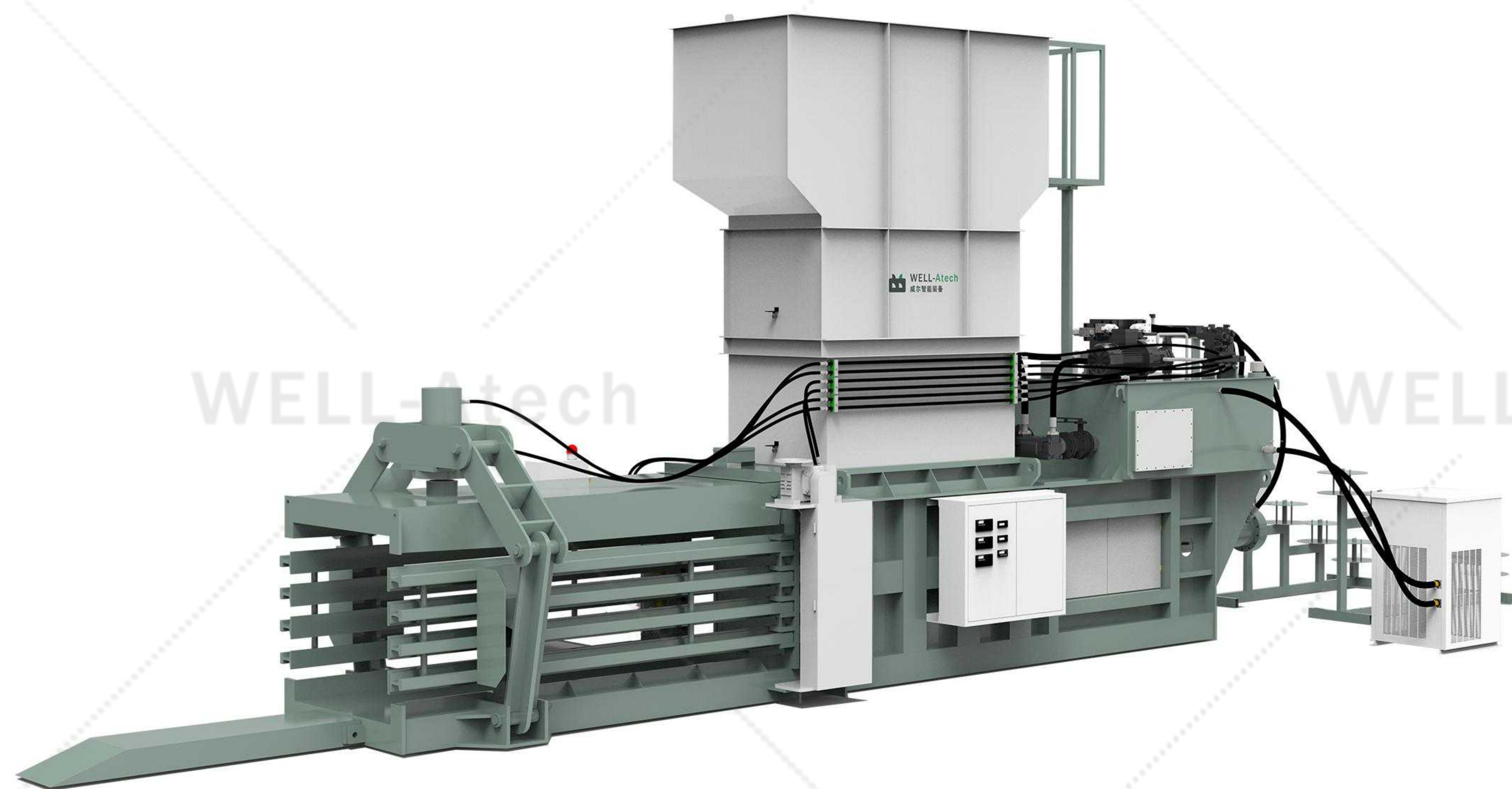
项目 Item 型号 Model	WEDS-1000	WEDS-1200	WEDS-1600	WEDS-1800	WEDS-2000
刀箱尺寸 Crushing Chamber (mm)	1000*700	1200*800	1600*1100	1800*1000	2100*1300
刀片直径 Rotation Diameter (mm)	φ330	φ400	φ550	φ500	φ650
刀片厚度 Blade Thickness (mm)	30/40	50/60	60	60	60/80
功率 Power (kW)	30+30	45+45	90+90	75+75	200+200
外形尺寸 L*W*H Dimension (mm)	3150*2150*2500	4100*2300*2800	5630*3160*3200	6110*4957*5520	6700*3700*3600
整机重量 Weight (kg)	4500	8000	16000	22000	29000

项目现场 Project Case



卧式打包机

Horizontal Baler



威尔智能 WEB 系列卧式打包机，卧式自动化机型，自动铁丝捆包，广泛应用于包装厂、纸箱厂、印刷厂、垃圾分类处理站、专业回收站等场所。

- ❑ PLC程序，触摸屏控制，操作简单，自带加料检测，自动压缩，实现无人化作业；
- ❑ 自动捆包装置，速度快，故障率低且易于清洁保养；
- ❑ 尺寸和包块尺寸可根据客户要求定制；
- ❑ 故障自动诊断，自动显示，提高检测效率。

WELL-Atech WEB series Horizontal Baler, horizontal type, automatic working mode. Widely used in packing plants, carton factories, printing plants, garbage sorting and treatment stations, professional recycling stations and other places.

- ❑ PLC control system, touch screen control, with feed detection, automatic compression, unmanned operation;
- ❑ Automatic baling device, fast speed, low failure rate and easy to clean and maintain;
- ❑ Chamber size and bale size can be customized according to customer requirements;
- ❑ Automatic fault diagnosis, automatic display, improve the detection efficiency.

适用物料 Application

- ❑ 废纸类：报纸、杂志、图书、各种包装纸、办公用纸、纸盒等；
 - ❑ 塑料类：各种塑料袋、塑料包装物和矿泉水瓶、塑料瓶等；
 - ❑ 纺织品类：废弃衣服、裤子、袜子、毛巾、书包、布鞋、床单、被褥、毛绒玩具等。
- ❑ Paper: Newspaper, Magazine, Book, Wrapping paper, Carton, etc;
 - ❑ Plastic: Plastic bag, Plastic film, Pet bottle, etc;
 - ❑ Textile: Old clothes, pants, socks, towels, bags, cloth shoes, sheets, bedding, plush toys, etc.



▲ 纸盒 Carton



▲ 废纸 Paper



▲ 塑料瓶 PET bottle



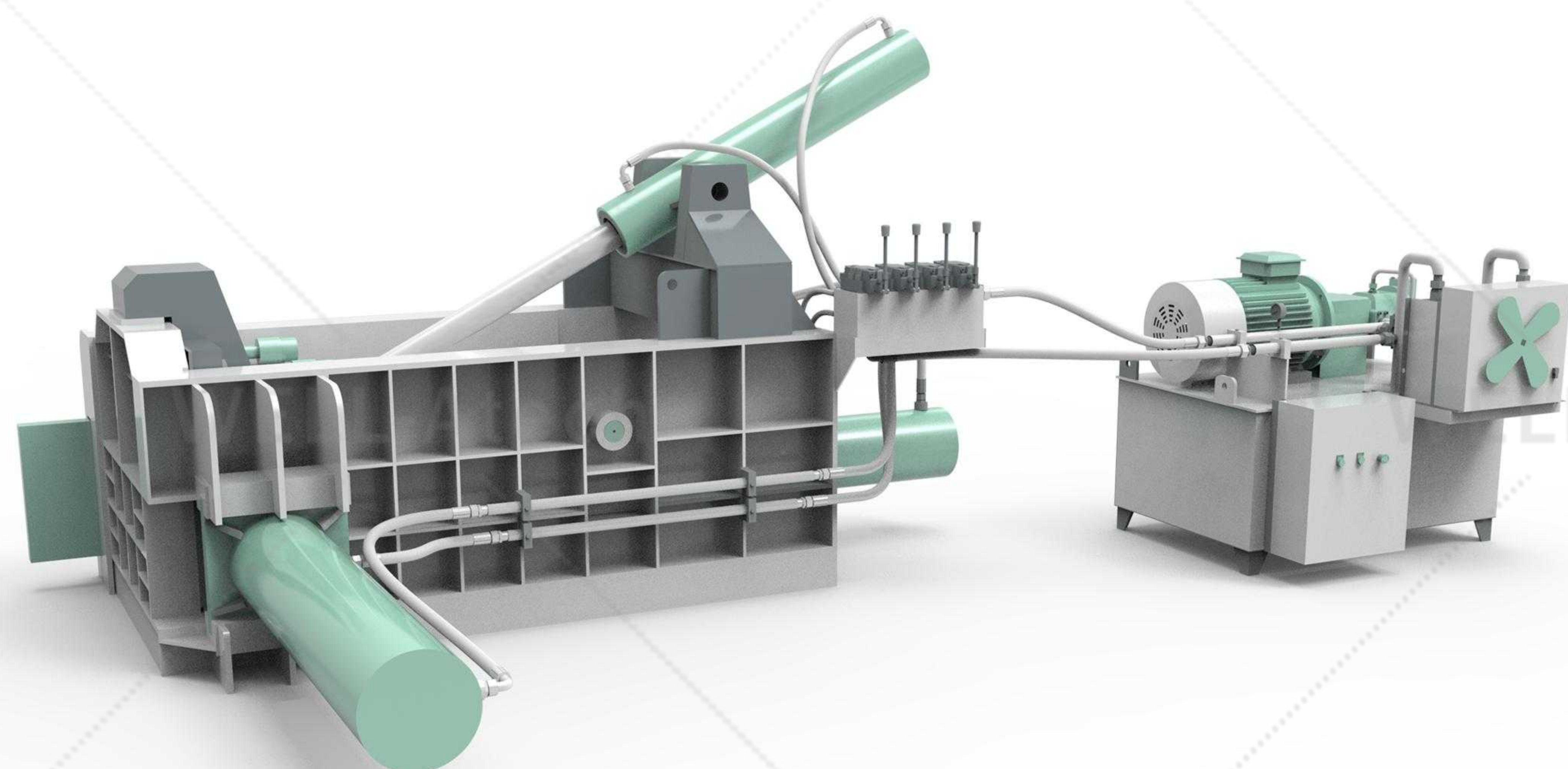
▲ 纺织品 Textile

型号参数 Specification

项目 Item 型号 Model	WEB-40A	WEB-60A	WEB-80A	WEB-100A	WEB-120A	WEB-150A
压力 Press force (tons)	40	60	80	100	120	150
打包尺寸 Bale size (mm)	720 * 720	1100 * 750	1100 * 750	1100 * 1100	1100 * 1250	1100 * 1250
功率 Motor power (kW)	22	22	37	45	55	90
重量 Weight (tons)	7	9	12	18	21	26
尺寸 L*W*H Dimension (mm)	6770* 3050* 3580	6880* 3850* 3550	6880* 3850* 3550	8560* 3950* 4550	9250* 4150* 4850	10050* 4100* 4910

金属打包机

Metal Baler



威尔智能WEM系列金属打包机，该系列液压金属打包机用于各种金属边角料的打包压缩成块，既可以降低运输和冶炼成本，又可提高产量。

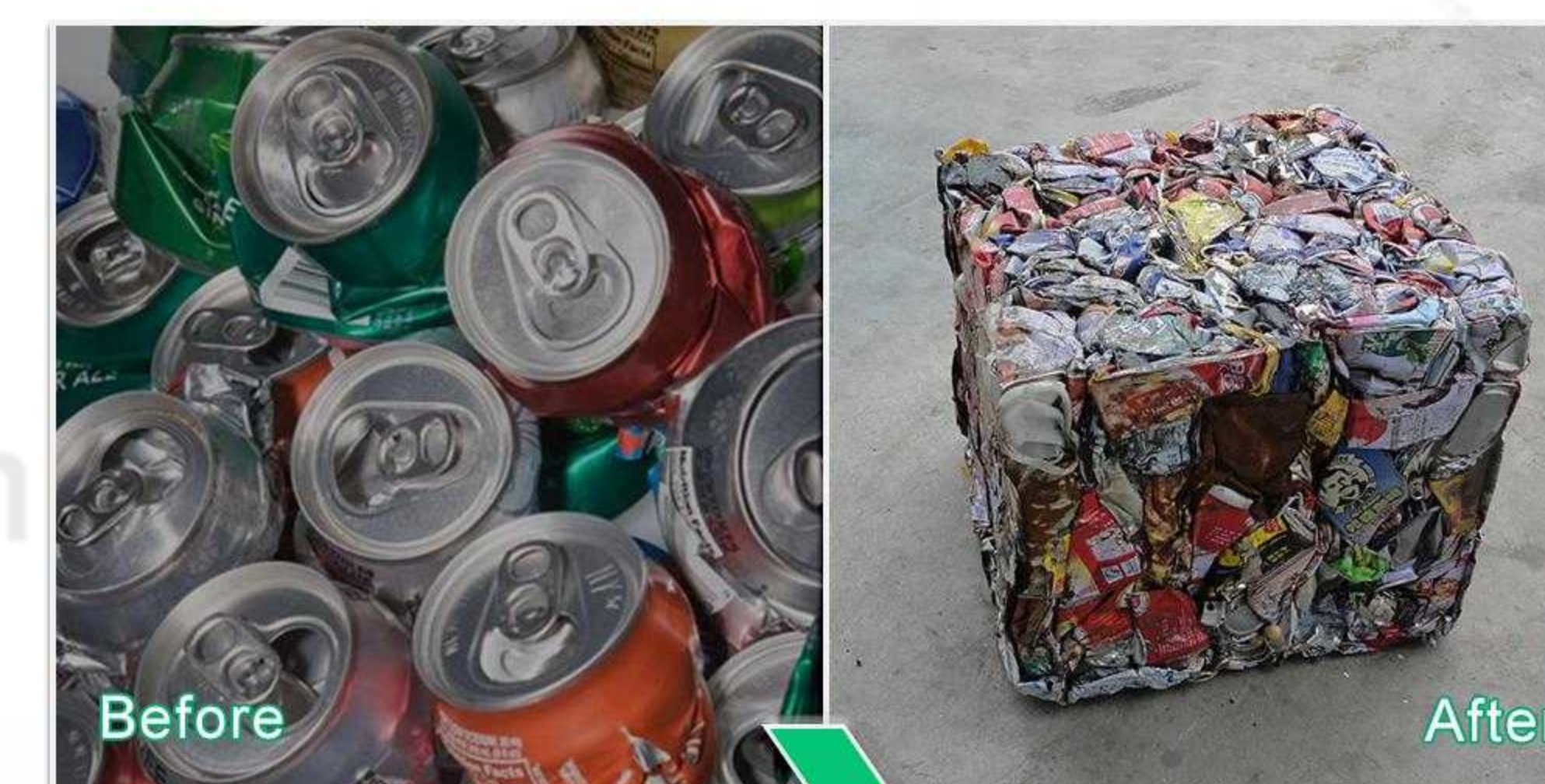
- 压缩腔尺寸和包块尺寸可根据用户要求来设计制定；
- 卧式结构，一次性压缩成型；
- 加料方便，压缩比例大，成型效率高；
- 液压驱动，可选择手动操作或PLC自动控制。

WELL-Atech WEM series hydraulic metal baler is used for compressing various metal scraps into blocks, which can not only reduce transportation and smelting costs, but also increase production.

- Chamber size and bale size can be customized as customer's requirements;
- Horizontal structure, one-time compression molding;
- Convenient feeding, large compression ratio, high molding efficiency;
- Hydraulic drive, can choose manual operation or PLC automatic control.

适用物料 Application

- 主要适用于易拉罐、金属边角料、刨花、废钢、废铝、废铜、废不锈钢、报废汽车等物料。
- Mainly used for UBC, scrap metal, metal shavings, scrap steel, scrap aluminum, scrap copper, scrap stainless steel, scrap car etc.



▲ 易拉罐 UBC



▲ 铁屑 Metal shavings



▲ 旧金属 Scrap metals



▲ 废铜线 Copper wire

型号参数 Specification

项目 Item 型号 Model	WEM-63	WEM-125	WEM-160	WEM-160	WEM-200	WEM-250
压力 Press force (tons)	63	125	160	160	200	250
打包尺寸 Bale size (mm)	200*200	250*250	300*300	250*250	300*300	400*400
功率 Motor power (kW)	7.5kW/10HP	15kW/20HP	30kW/40HP	30kW/40HP	18.5kW/25HP*2	22kW/30HP*2
循环时间 Cycle Time (s)	60	90	100	110	120	120
箱体尺寸 Press Chamber Size (mm)	800*500*450	1200*700*600	1400*800*700	1600*1200*800	1800*1200*800	2000*1400*900

铜米机

Cable Granulator

适用物料：废旧电缆。
Application: Scrap Copper Cable .

静电分选机
将金属与非金属混合物分离
Electrostatic Sorting Machine
Separate metals and non-metals from mixed material



除尘器
清除工作中的尘土，减少污染
Dust Remover
To remove dust and reduce pollution during work

出料展示 Output Display



铜粒 Copper

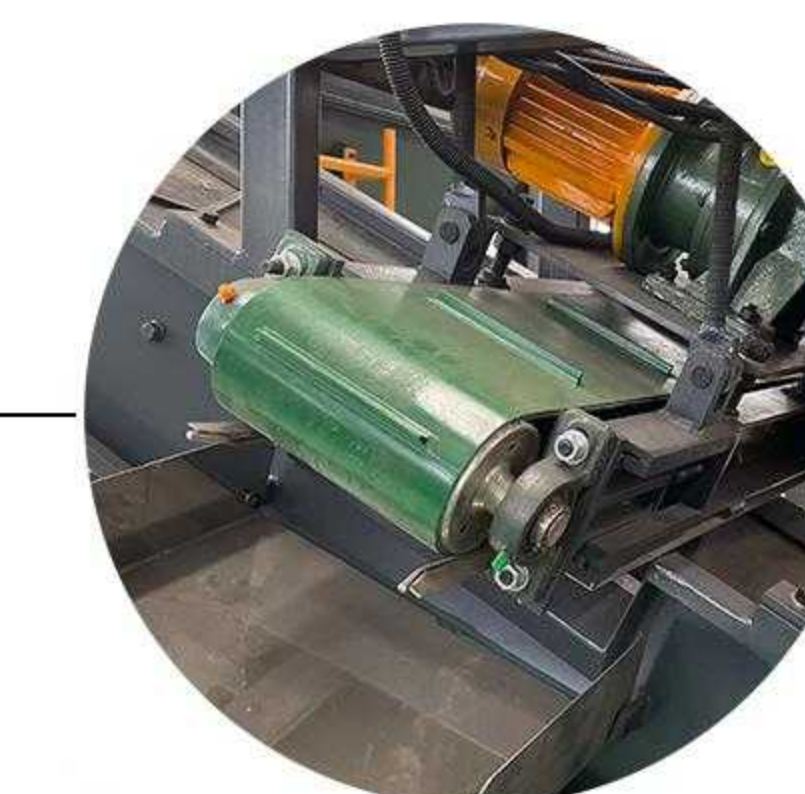


塑料 Plastic

粉碎机
粉碎线缆至要求尺寸
Crusher
Crush cables to target size



磁选机
永磁除铁器，分选铁质金属
Magnetic Separator
Permanent magnetic separator separation of ferrous metals



比重分选机
比重不同的两种物料分向流动
Gravity Separator
Materials of different gravity flow in different directions



塑料振动筛
筛选出大颗粒塑料和小颗粒塑料
Vibrating Screen(Plastic)
Screen out large and small particles of plastic



铜振动筛
用于筛分出黄铜合格料
Vibrating Screen (Copper)
Used to screen out qualified brass material



单轴撕碎机
粗破碎线缆，出料均匀
Single Shaft Shredder
Primary shred the cables discharging evenly



大件垃圾资源化处理系统

Bulky Waste Recycling System

适用物料：废旧沙发、床垫、家具等大件垃圾；园林垃圾等。

Application: Old sofa, Mattress, Furniture, Gargen waste and other bulky waste; Garden waste.

出料展示 Output Display



金属料 Metal



木质料 Wood



SRF替代燃料 SRF



风选机
分选出物料中轻物质和重物质
Air Separator
Separate light and heavy substances from the material



除尘设备
清除工作中的扬尘，减少污染
Dust Remover
To remove dust and reduce pollution during work



粗破碎机
双轴破碎机，撕碎大件物料
Primary Shredder
Double shaft shredder, crushing bulky waste



打包机
全自动卧式打包机，打包SRF替代燃料
Baler
Full-automatic horizontal baler used for pressing SRF



磁选机
永磁除铁器，分选铁质金属
Magnetic Separator
Permanent magnetic separator separation of ferrous metals



二级破碎机
双轴破碎机/单轴破碎机，破碎物料至40-60mm
Secondary Shredder
Double shaft shredder shred material to 40-60mm



输送机
链板输送机，输送物料
Chain Conveyor
Feeding conveyor made of galvanized chain plate

废旧轮胎破碎分选系统

Scrap Tire Recycling System

适用物料：轿车轮胎、卡车轮胎等。
Application: Scrap car tires, truck tires and other.

出料展示 Output Display



胶块 Rubber



胶粒 Rubber Granules



钢丝 Steel Wire

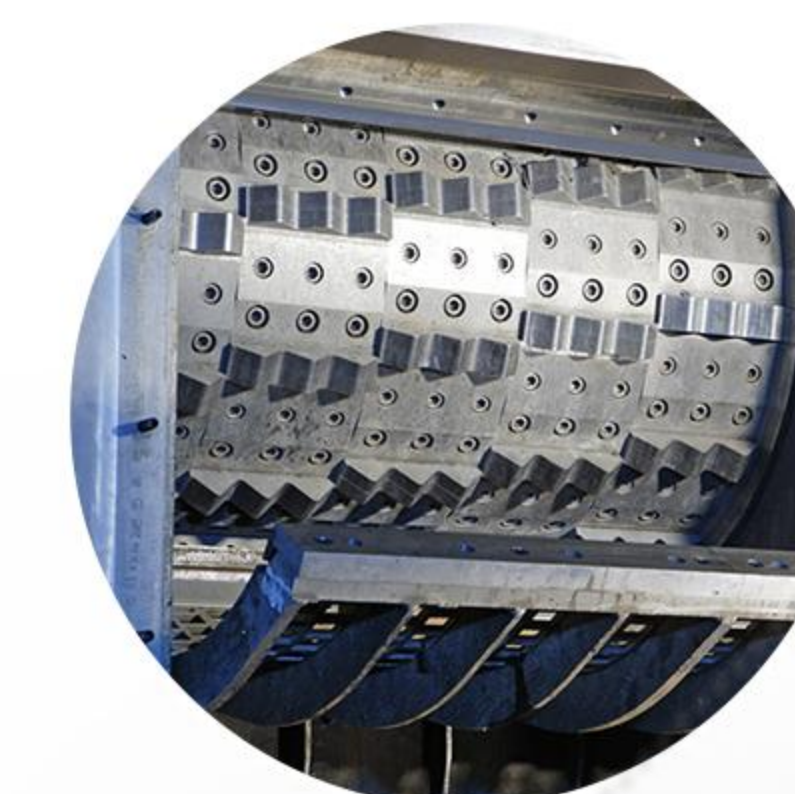
拉丝机
轮胎圈口钢丝拉丝机
Tire Debeader
Used to separate rubber and steel wire of bead in order to get whole steel wire



蝶盘筛
根据物料尺寸分选出满足要求的物料
Disc Screen
Separate shredded material according to qualified size



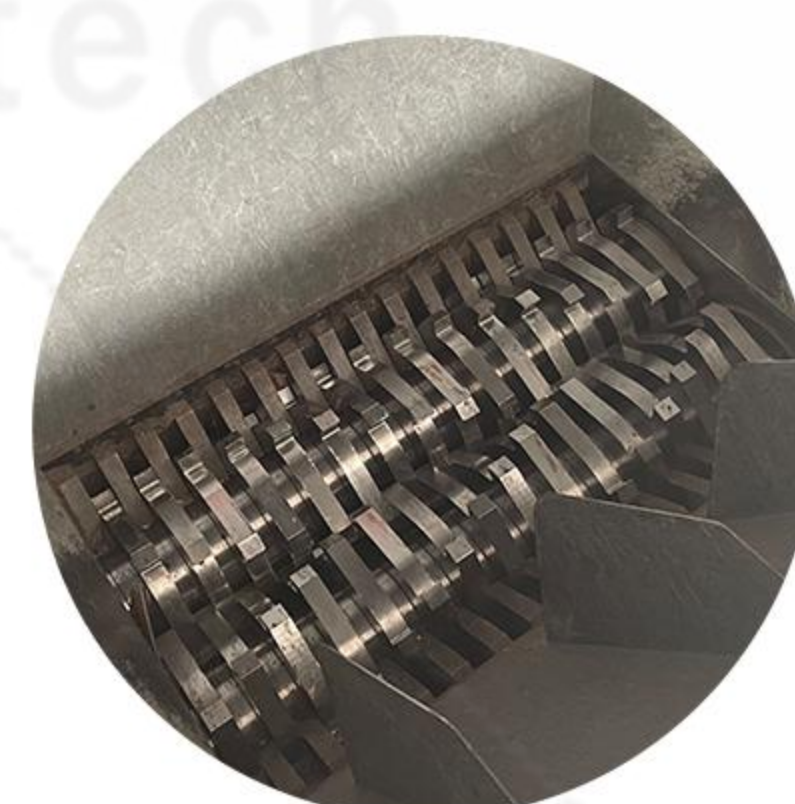
钢丝分离机
胶块细破碎，分离出细钢丝
Rasper
Fine crushing the rubber blocks and separate the steel wire from it



磁选机
永磁除铁器，分选出细钢丝
Magnetic Separator
Permanent magnetic separator separation of ferrous metals



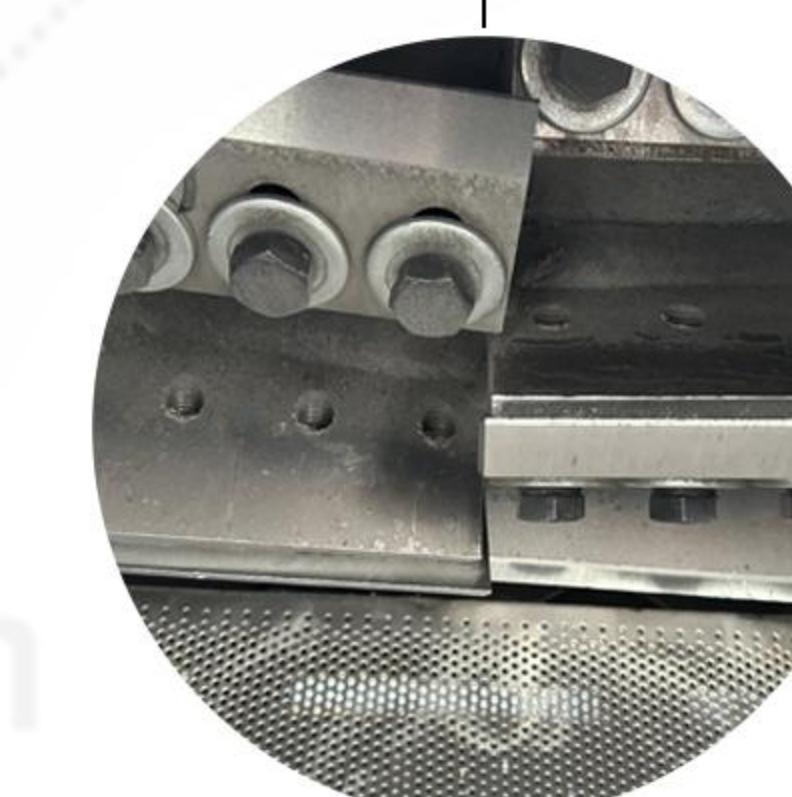
轮胎破碎机
双轴破碎机，轮胎粗破碎
Double shaft shredder
Used for tire primary shredding



除尘设备
脉冲除尘设备，清除扬尘
Dust Remover
To remove dust and reduce pollution during work



粉碎机
粉碎橡胶颗粒
Crusher
Crush rubber granules to target size



旧金属破碎分选系统

Scrap Metal Recycling System

适用物料：报废汽车外壳、金属桶、轻薄金属料、家用电器、彩钢瓦、铝合金、易拉罐等。
 Application: Car shell, Metal drum, Light Metals, Home appliances, Color steel tile, Aluminum alloy, UBC etc.

出料展示 Output Display



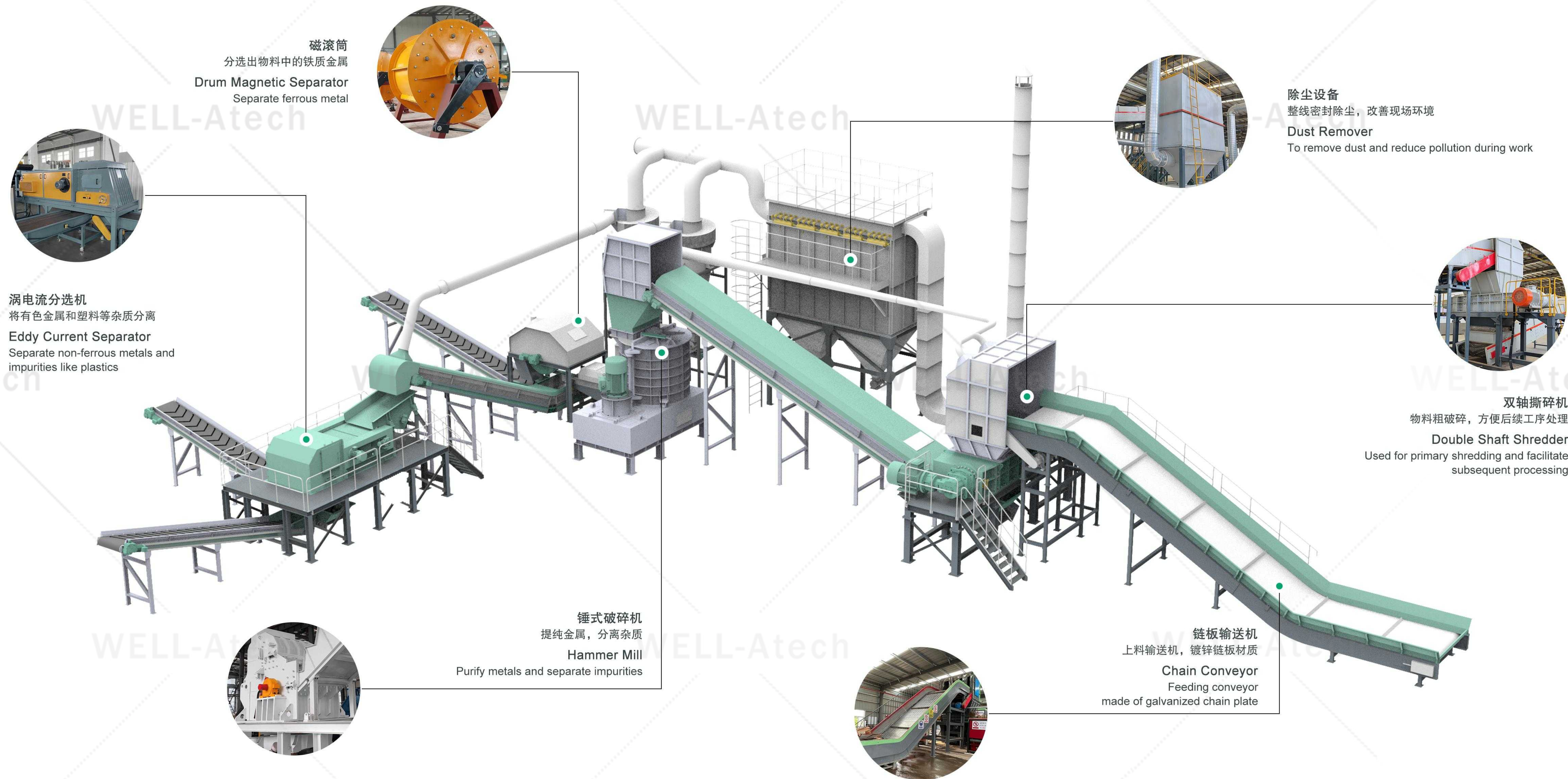
铁质金属 Metal



有色金属 Nonferrous metals



塑料玻璃等 Impurity



磁滚筒
分选出物料中的铁质金属
Drum Magnetic Separator
Separate ferrous metal



涡电流分选机
将有色金属和塑料等杂质分离
Eddy Current Separator
Separate non-ferrous metals and impurities like plastics



除尘设备
整线密封除尘，改善现场环境
Dust Remover
To remove dust and reduce pollution during work



双轴破碎机
物料粗破碎，方便后续工序处理
Double Shaft Shredder
Used for primary shredding and facilitate subsequent processing



锤式破碎机
提纯金属，分离杂质
Hammer Mill
Purify metals and separate impurities



链板输送机
上料输送机，镀锌链板材质
Chain Conveyor
Feeding conveyor made of galvanized chain plate

生物质秸秆破碎分选系统

Biomass Straw Recycling System

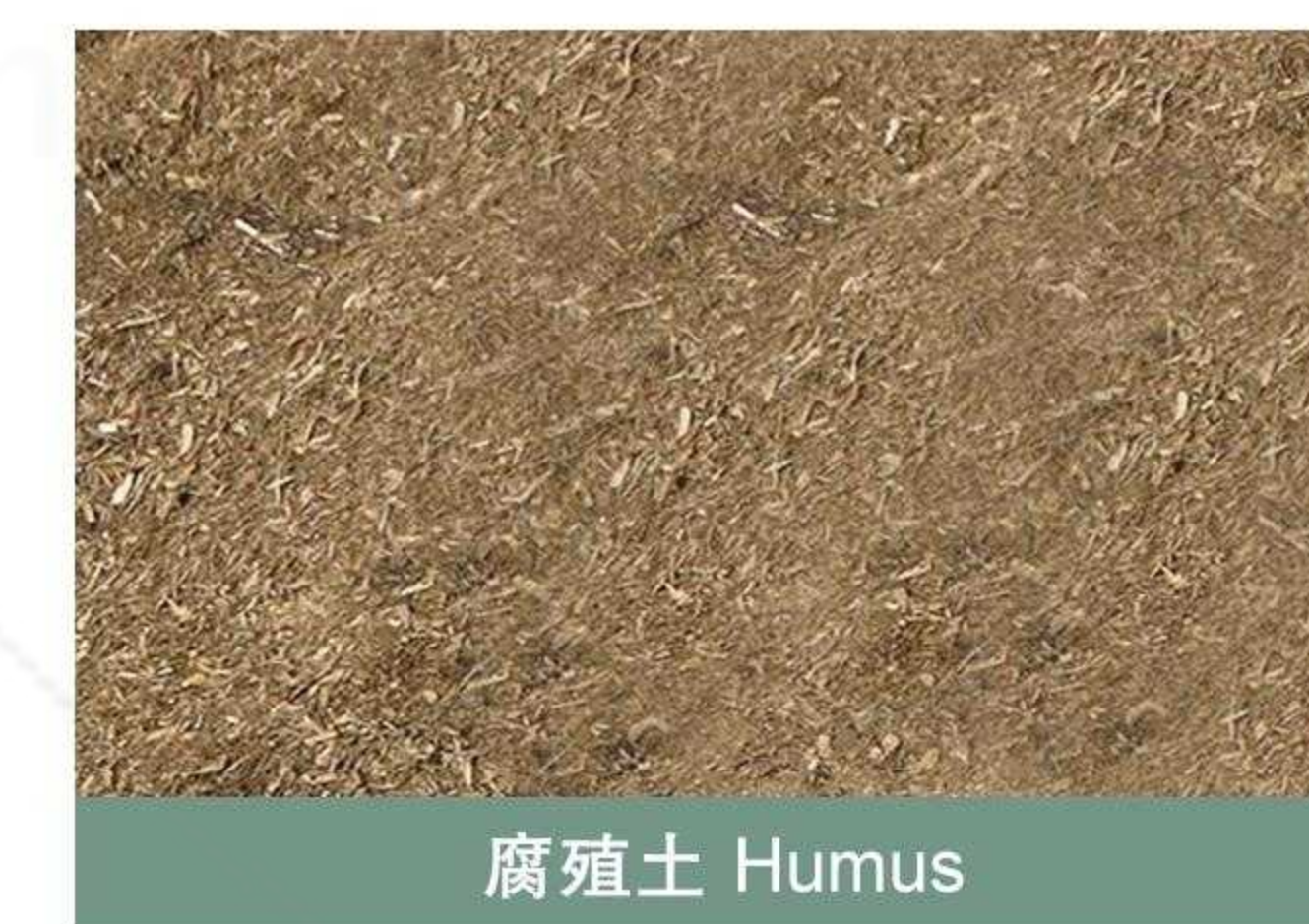
适用物料：稻草秸秆、竹子、木材、玉米秸秆、高粱秸秆、豆类秸秆、果壳、甘蔗渣等。

Application: Biomass Straw, Bamboo, Wood, Corn Straw, Sorghum Straw, Bean Straw, Coconut Shell.

出料展示 Output Display



替代燃料 SRF



腐殖土 Humus



金属料 Metal

一级破碎机
双轴撕碎机，生物质秸秆粗破碎
Primary Shredder
Used for primary shredding of biomass straw



磁选机
选出铁质金属，分选率≥99%
Magnetic Separator
Separate ferrous metal
separation rate ≥ 99%



滚筒筛
筛选出腐殖土，分选率≥95%
Rotary Screen
Sort out humus soil, sorting rate ≥95%



二级破碎机
双轴撕碎机，95%出料≤50mm
Secondary Shredder
Double shaft shredder
95% output size ≤50mm



除尘设备
脉冲除尘设备，清除扬尘
Dust Remover
To remove dust and reduce pollution during work



混合生活垃圾破碎分选系统

MSW Recycling System

适用物料：居民生活垃圾、城镇生活垃圾、陈腐垃圾。

Application: Household waste, urban waste, and aged waste.

蝶盘筛

筛选出物料的石头、玻璃、陶瓷、金属等非可燃物

Disc Screen

Sort out the stone, glass, potsherd, metal and other non-combustible material from material



分拣平台

将塑料、纸板、布料等分类回收

Sorting Platform

Sort and recycle plastics, cardboard, cloth, etc.



双轴撕碎机

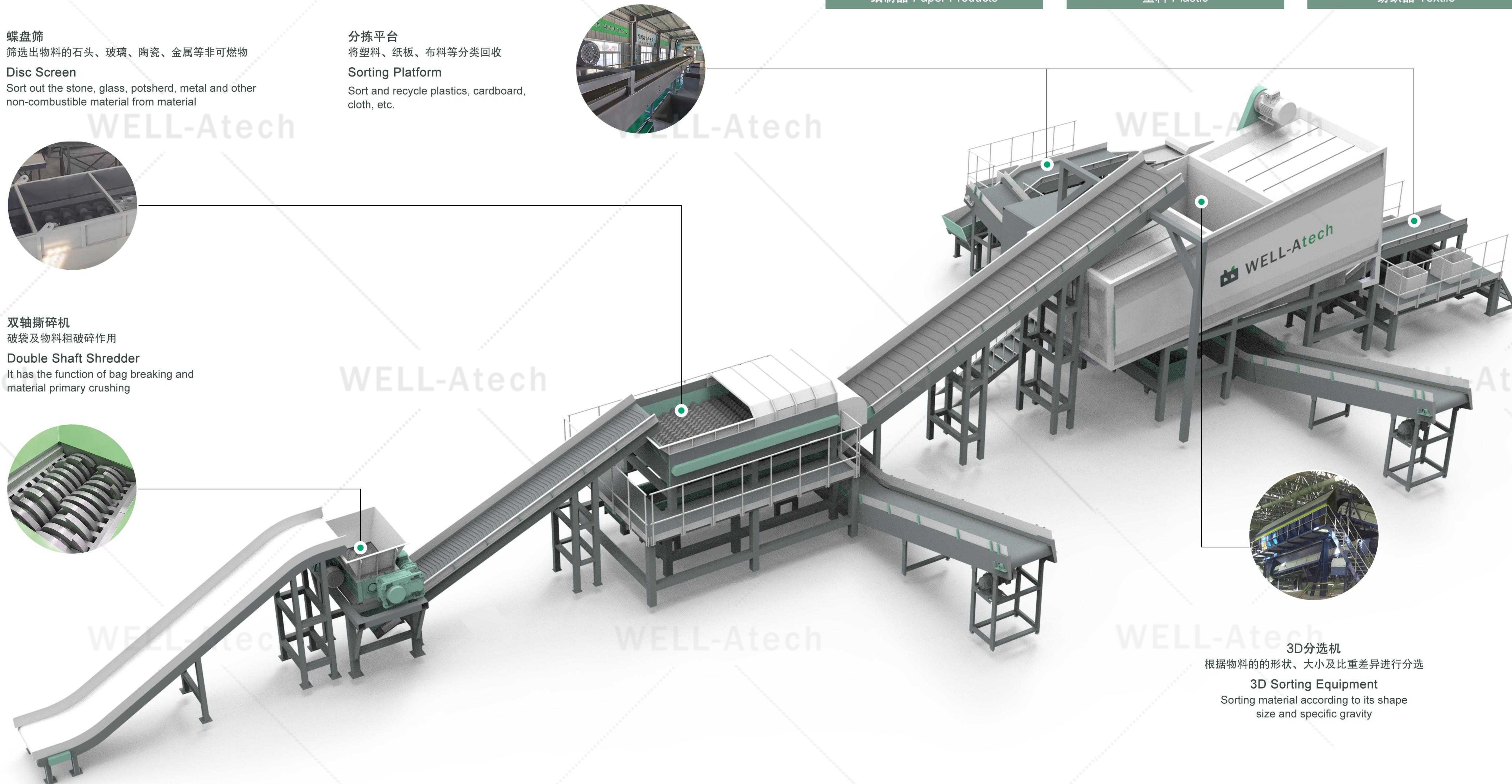
破袋及物料粗破碎作用

Double Shaft Shredder

It has the function of bag breaking and material primary crushing



出料展示 Output Display



3D分选机
根据物料的形状、大小及比重差异进行分选
3D Sorting Equipment
Sorting material according to its shape size and specific gravity

工业垃圾资源化处理系统

Industrial Waste Recycling System

适用物料：旧衣服、皮革、纺织品边角料、地毯厂废布料、一般工业垃圾等。

Application: Old clothes, leather, textile scraps, carpet factory waste, general industrial waste, etc.

出料展示 Output Display



SRF替代燃料 SRF



RDF燃料棒 RDF



金属料 Metal

单轴粉碎机
破碎物料至要求尺寸
Single Shaft Shredder
Crush materials to target size



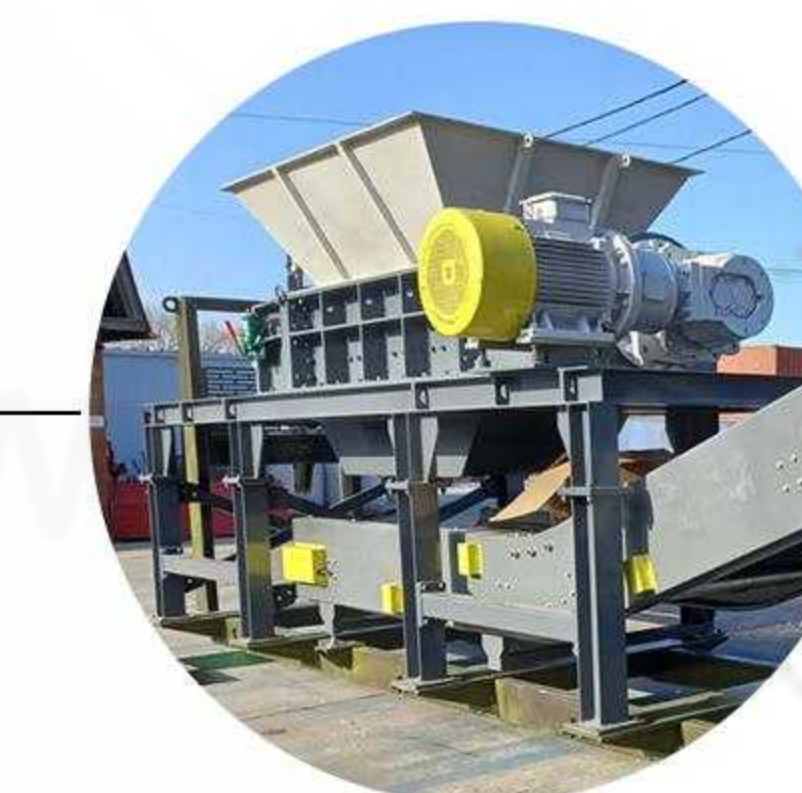
除尘设备
清除工作中的扬尘，减少污染
Dust Remover
To remove dust and reduce pollution during work



磁选机
永磁除铁器，分选铁质金属
Magnetic Separator
Permanent magnetic separator, separation of ferrous metals



双轴粉碎机
工业垃圾粗破碎，方便后续处理
Double Shaft Shredder
Pre-crushing of industry waste convenient further processing



打包机
全自动卧式打包机，打包SRF替代燃料
Baler
Full-automatic horizontal baler, used for pressing SRF



滚筒筛
筛选出物料中的石子等杂质
Rotary Screen
Screen out impurities such as stones in the material

在全球 GLOBAL



部分出口国家
Some Countries
We Export To

- | | | | | | | | |
|---|---|--|--|---|---|---|--|
|  泰国
Thailand |  阿联酋
The United Arab Emirates |  俄罗斯
Russia |  尼日利亚
Nigeria |  斯里兰卡
Sri Lanka |  巴布亚新几内亚
Papua New Guinea |  加拿大
Canada |  巴西
Brazil |
|  菲律宾
Philippines |  沙特阿拉伯
Saudi Arabia |  乌兹别克斯坦
Uzbekistan |  南非
South Africa |  巴拉圭
Paraguay |  澳大利亚
Australia |  美国
America |  阿根廷
Argentina |
|  越南
Vietnam |  伊朗
Iran |  白俄罗斯
Belarus |  阿尔及利亚
Algeria |  马来西亚
Malaysia |  新西兰
New Zealand |  墨西哥
Mexico |  哥伦比亚
Columbia |